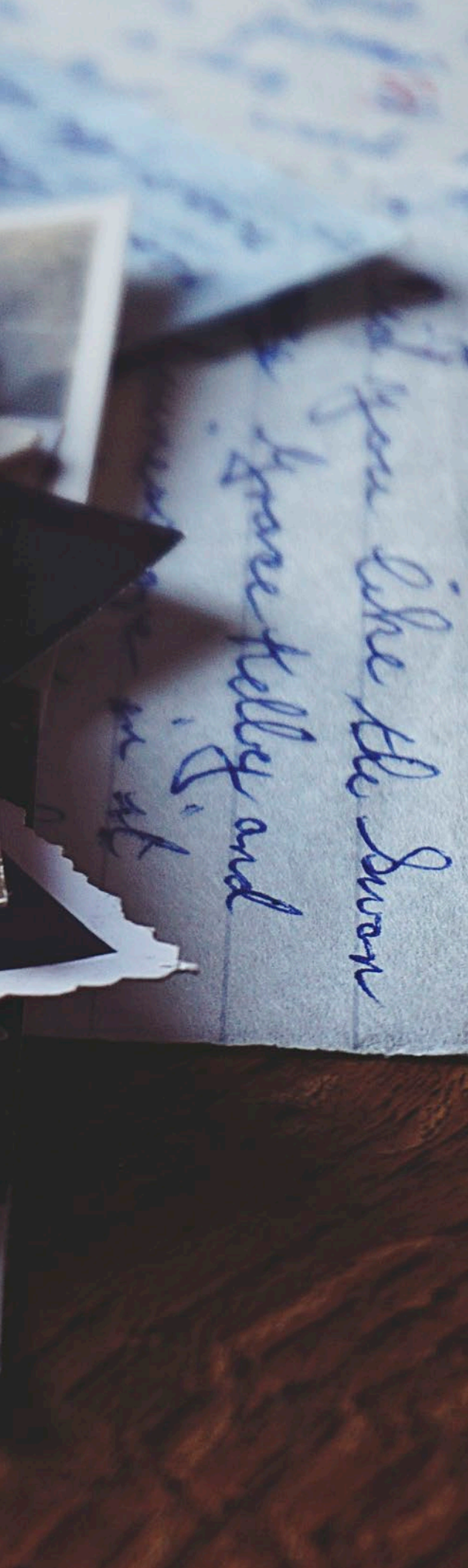


2021



J. HARVEST & FROST
CORPORATE SHIRTMAKER





J.HARVEST & FROST

Our mission is to bring passion and aesthetics to your workday. J.Harvest & Frost is built on the belief that aesthetics, quality design and precision craftsmanship play fundamental parts in our lives. In other words – we believe in order to thrive and find our passion while we work - we need to surround ourselves with things which inspire and encourage us.

WE ARE SHIRTMAKERS

We are a work shirt brand for men and women - and in order to succeed in our mission, and become “fuel for your passion”, we offer well-made, detailed and affordable work shirts of the highest quality. We aim to be that undefinable, yet powerful, intangible asset which aesthetics represents in your workday. Harvest & Frost was established in 2014 as a result of a collaboration between two brands – James Harvest Sportswear, rooted in U.S. college fashion with worldwide distribution and Frost, with its focus on tailored, well-cut garments in a small scale. Two excellent concepts brought together in one brand.

We started on a journey to develop our lines of high quality work shirts for men and women.

To be there with you – everyday - at the workshop, the office or at the pub – we set out to develop a collection of shirts which would meet the needs of those occasions. Quality, roughness, durability became our lodestars.

We found inspiration in early 20th century fashion, as well as books, movies, brands and classic designers. We were determined to create something unique – but still at affordable prices. We wanted to make each garment something we would've loved to wear ourselves.

NEVER DONE

Still, people's expectations and needs change, so we realize, with delight, that our pursuit for that perfect work shirt will be never-ending and we'll continue our journey and search for the best fit, materials, details, stitches and techniques.

Making these products demands a holistic view on design, and we recognize that aesthetics are more than visual beauty. We live by the rule that quality design is the sum of three inseparable variables; excellent craftsmanship, the best materials and integrity.

So, while we're on our quest to give you that little bit of extra beauty in your workday – rest assured – we have got your back. Work hard – and put all your energy into your own dreams. We'll make sure you're always dressed for the occasion.



THE J. HARVEST & FROST CONCEPT DIVISIONS



Black Bow – our top of the line collection business shirt. Full featured, classic shirts with state of the art anti-spill Nano treatment, prepressed sleeve, Never Iron treatment, Taped Seams, Split Yoke. 100 % premium long staple compact cotton.



Green Bow – our classic business shirt collection. Here you find our single color products. Timeless classics that will never go out of style. Non Iron, Taped Seams, Split Yoke. 100 % premium long staple compact cotton.



Red Bow – the classic collection with a twist. Our well-worked shirts with contrast details to suit different situations. Works fine as a business shirt and for more casual occasions. Non Iron, Taped Seams, Split Yoke. Most are made from 100 % premium long staple compact cotton.



Purple Bow – our trend collection. This collection is always changing to meet the needs for fashion today and tomorrow. Non Iron, Taped Seams, Split Yoke. Non Iron, Taped Seams, Split Yoke.



Indigo Bow – the indigo bow line is all about casual shirts. Our Oxford Shirts in Indigo Bow is the worker's shirt that is already worked in. Enjoy our Tribute to Leisure.



Yellow Bow – our price & eco conscious shirt collection. Plenty of bang for your bucks. These shirts are made from various materials; lyocell, long staple Compact Cotton, organic cotton, recycled polyester, recycled polyamide and recycled Elastan.

Making the finer wear work

- From the office to the dinner party

BLACK BOW

THE ULTIMATE IRON FREE SHIRT WITH REVOLUTIONARY SPILL PROTECTION, AND PROBABLY THE LAST GREAT SHIRT YOU'LL EVER NEED. SAY GOODBYE TO IRONING, UNTIMELY COFFEE SPILLS AND BUSINESS LUNCH STAINS. THANKS TO ADVANCED NANOTEX TECHNOLOGY, THE BLACK BOW HAS YOUR BACK. BLACK BOW IS SET OUT TO BE THE WORLD'S BEST WORKING SHIRT. YOUR NOW ABLE TO TEST IT IN ITS NATURAL ENVIRONMENT - YOUR LIFE.

SPLIT YOKE

The construction of the yoke involves splitting the yoke, rotating the parts in the correct angle and sewing them back together. This allows the fabric a bit more stretch which gives you improved freedom of movement and a better fit. We also added mechanical stretch in the material to make it comfortable to look this sharp.

ELASTIC COLLAR BUTTON

In the strive to make the worlds best working shirt, Tor Bjarne made a pledge to himself. Before retiring he would make a patented solution to the problem many (including himself) has. Closing the top button in the collar, is for some very uncomfortable or even impossible. This should be possible to amend.

We have taken the first step in that direction. The top collar button is fastened with elastic tread instead of the traditional one. This makes room for extra movement and is therefore more comfortable when wearing. A small, but important, step towards our big aim at making the finer wear work.

NEVER IRON

Everybody knows about Non Iron. Sometimes it's true and sometimes, not so much. We already have Non-Iron on most of our shirts, and we are confident that you have tried it and found it to be one of the ones that works. We were not content. There is still some room for improvement, said Tor Bjarne... Which of course there was. Enter; Never Iron. Life is bigger than creases.

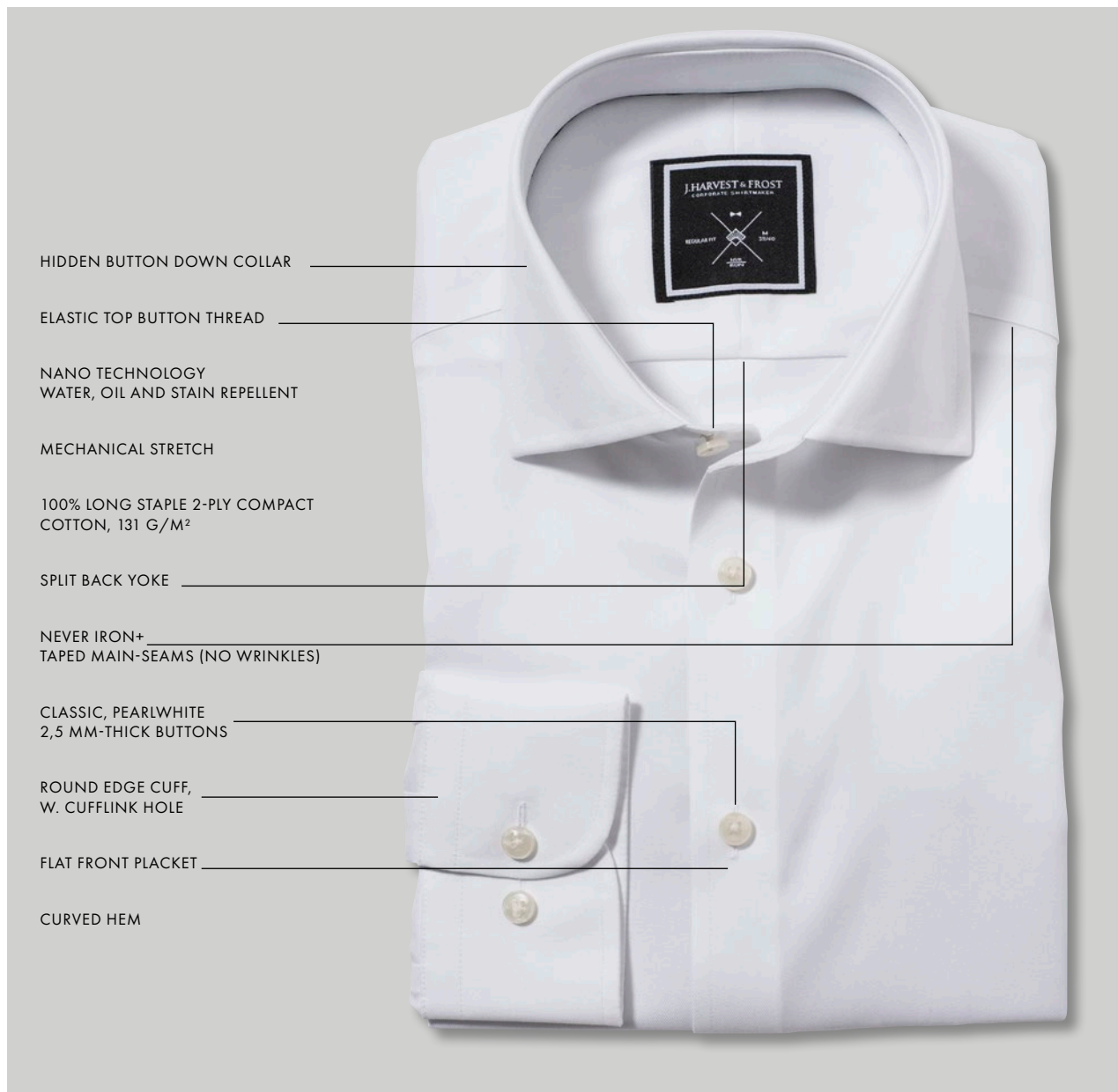
A Never Iron shirt stays crisp through out the day, due to the taped seams and the wrinkle resist treatment. The activator for the Never Iron function is however moisture. So it needs to get damp or wet to straiten out the small amount of creases accumulated during the use of the shirt.

NANO TECHNOLOGY

Beside our regular acclaimed style and finish, we went further into the construction of the fabric. We went far into the fabric. We enhanced the fibres on a molecular level, maintaining the feel and look of the cotton, but made it more resistant towards liquids and oils. Both from the outside and the inside. So if you spill, or get a nervous sweat attack, minutes before your big meeting, you still look like a million bucks. Brush it of and nail that presentation.







HIDDEN BUTTON DOWN COLLAR

ELASTIC TOP BUTTON THREAD

NANO TECHNOLOGY
WATER, OIL AND STAIN REPELLENT

MECHANICAL STRETCH

100% LONG STAPLE 2-PLY COMPACT
COTTON, 131 G/M²

SPLIT BACK YOKE

NEVER IRON+
TAPED MAIN-SEAMS (NO WRINKLES)

CLASSIC, PEARLWHITE
2,5 MM-THICK BUTTONS

ROUND EDGE CUFF,
W. CUFFLINK HOLE

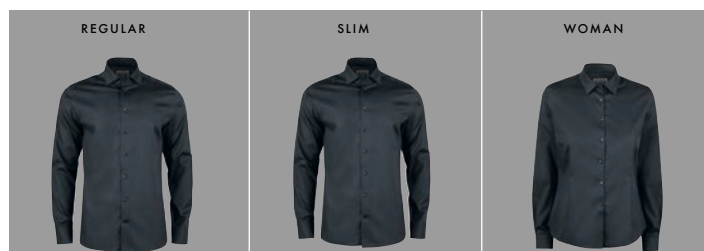
FLAT FRONT PLACKET

CURVED HEM

BLACK BOW 60 REGULAR 2906001 ♂ S-5XL
BLACK BOW 60 SLIM 2906002 ♂ XS-XXL
BLACK BOW 60 WOMAN 2906003 ♀ XS-4XL

The ultimate iron free shirt with revolutionary spill protection, and probably the last great shirt you'll ever need. Say goodbye to ironing, untimely coffee spills and business lunch stains. Thanks to advanced nanotex technology, the Black Bow has your back. Black Bow is set out to be the world's best working shirt.

999 KR

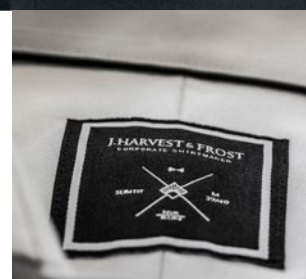


FABRICATION FACTS

FABRIC
100% LONG STAPLE. 2-PLY
COMPACT COTTON FINE TWILL
WEAVE. 131 G/M².

DETAILS
THREADS, BUTTONS & LABELS:
RECYCLED POLYESTER
COLLAR RIBBON: POLYESTER

PACKAGING:
FSC MIX PAPER/RECYCLABLE
POLYESTER






WRINKLE RESIST
6/6


STRETCH
2/6


WEIGHT
131 G/M²

FEATURES


NEVER-IRON


LONGLASTING WHITE

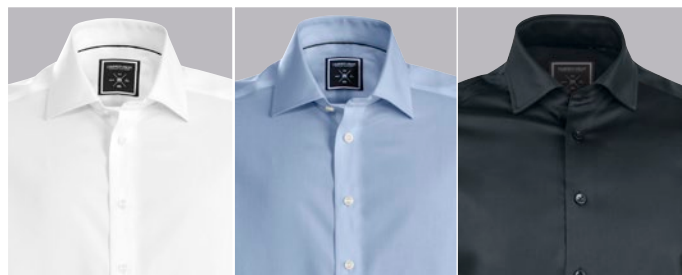
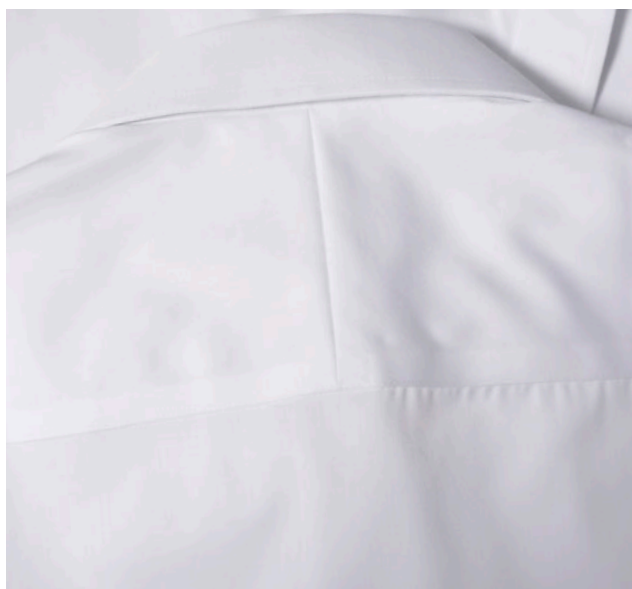

MECHANICAL STRETCH


WATER, OIL AND STAIN
REPELLENT

BLACK BOW 60



NANO TECH ANTI-SPILL



100 WHITE

500 SKYBLUE

900 BLACK



SEMI CUT-AWAY COLLAR

NON-IRON PATENTED ENVIRONMENTAL TREATMENT

SOLID COLORS.

100% LONG STAPLE 2-PLY COMPACT COTTON, 124 G/M²

SPLIT BACK YOKE

TAPED MAIN-SEAMS (NO WRINKLES)

TALL, 4 MM-THICK BUTTONS

SINGLE ANGLE CUFF, W. CUFFLINK HOLE

RAISED PLACKET

CURVED HEM

- GREEN BOW 01 REGULAR 2900101 ♂ S-5XL
- GREEN BOW 01 SLIM 2900102 ♂ XS-XXL
- GREEN BOW 01 WOMAN 2900103 ♀ XS-4XL
- GREEN BOW 01 WOMAN RELAXED 2900104 ♀ XS-4XL

Nothing beats the clean look of a solid dress shirt. But even at a solid color there are still some features that make our shirt stand out from the crowd. The shirt is crafted in our favorite high performance twill texture. This gives the perfect sheen to it, results in a substantial good hand feeling and makes it less transparent than similar white dress shirts. A split yoke in back, medium cut-away collar and a 35 mm. raised placket set the edge for this sharp, but classic shirt.

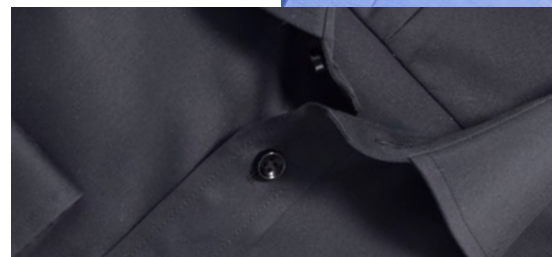
749 KR

FABRICATION FACTS

FABRIC
 100% LONG STAPLE, 2-PLY COMPACT COTTON FINE TWILL WEAVE. 124 G/M²

DETAILS
 THREADS, BUTTONS & LABELS: RECYCLED POLYESTER
 COLLAR RIBBON: POLYESTER

PACKAGING:
 FSC MIX PAPER/RECYCLABLE POLYESTER



NEW!

RELAXED
FEMALE
STYLE



WOMAN RELAXED
AVAILABLE IN WHITE & SKYBLUE




WRINKLE RESIST
6/6


STRETCH
0/6


WEIGHT
124 G/M²

FEATURES


NON-IRON


LONGLASTING WHITE

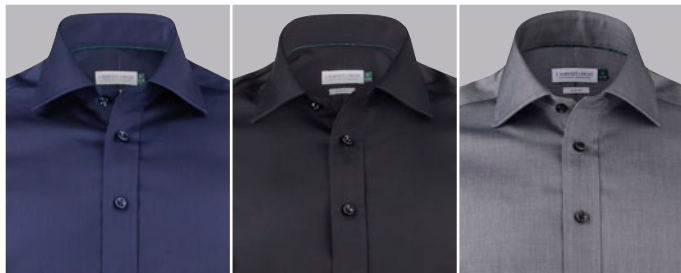
GREEN BOW 01



100 WHITE

500 SKY BLUE

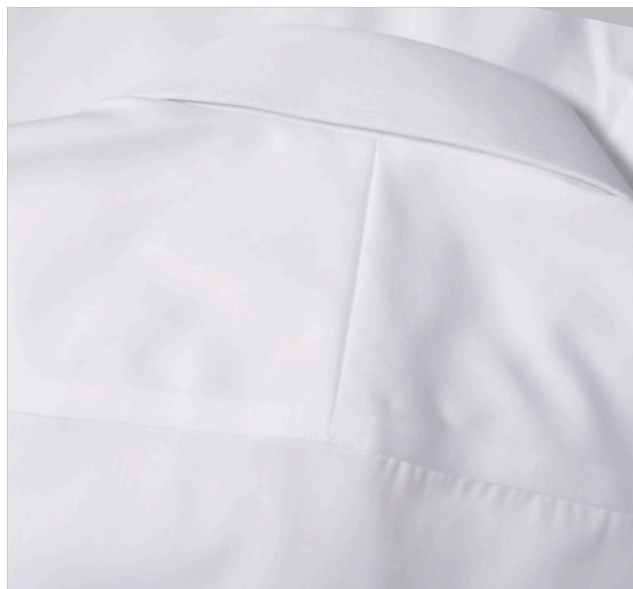
560 MIDBLUE



600 NAVY

900 BLACK

911 GREY





SEMI CUT-AWAY COLLAR

NON-IRON PATENTED ENVIRONMENTAL TREATMENT

SOLID COLORS WITH CONTRASTS.

100% LONG STAPLE 2-PLY COMPACT COTTON, 124 G/M²

SPLIT BACK YOKE

TAPED MAIN-SEAMS (NO WRINKLES)

TALL, 4 MM-THICK BUTTONS

SINGLE ANGLE CUFF, W. CUFFLINK HOLE

FLAT FRONT PLACKET

CURVED HEM

RED BOW 20 REGULAR 2902001 ♂ S-4XL
 RED BOW 20 SLIM 2902002 ♂ XS-XXL
 RED BOW 20 WOMAN 2902003 ♀ XS-4XL

Through the Red bow line we reinvent the classic shirt. By adding sophisticated colors and details we made it more modern and smart, but still kept it a classy business shirt. The shirt is crafted in our favorite high performance twill texture. This gives the perfect sheen to it, results in a substantial good hand feeling and makes it less transparent than similar dress shirts.

849 KR



FABRICATION FACTS

FABRIC
 100% LONG STAPLE . FINE TWILL WEAVE. 124 G/M².

DETAILS
 THREADS, BUTTONS & LABELS: RECYCLED POLYESTER
 COLLAR RIBBON: POLYESTER

PACKAGING:
 FSC MIX PAPER/RECYCLABLE POLYESTER





WRINKLE RESIST
6/6



STRETCH
0/6



WEIGHT
124 G/M²

FEATURES

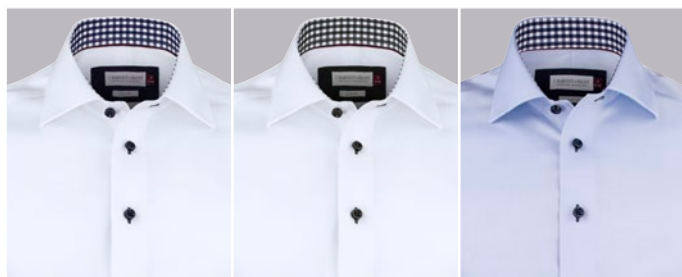


NON-IRON



LONGLASTING WHITE

RED BOW 20



1066 WHITE/NAVY

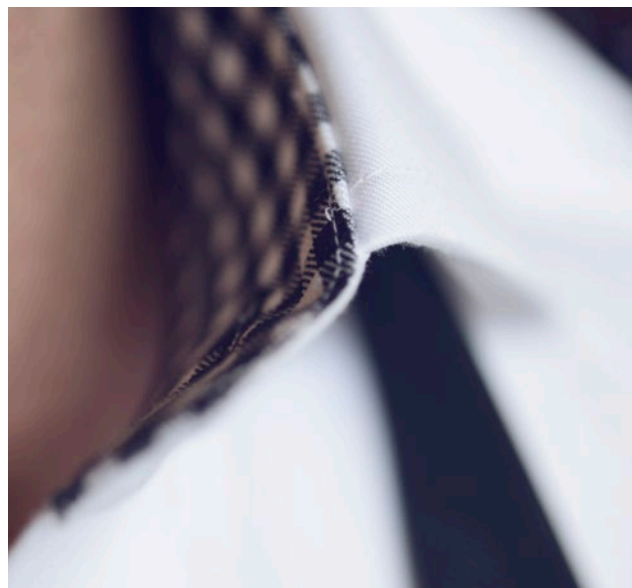
109 WHITE/BLACK

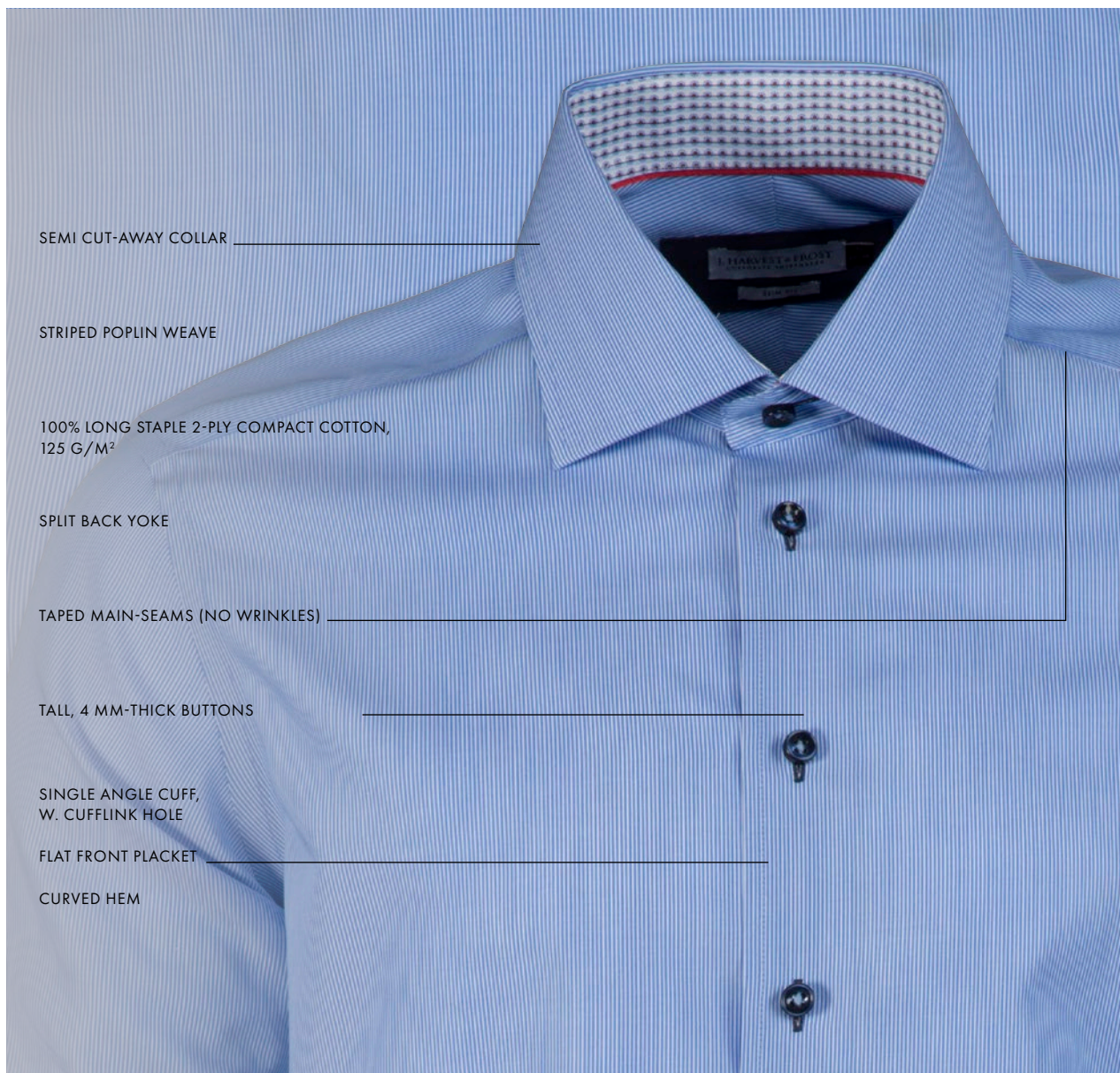
5066 SKY BLUE/NAVY



605 NAVY/SKY BLUE

904 BLACK/RED





SEMI CUT-AWAY COLLAR

STRIPED POPLIN WEAVE

100% LONG STAPLE 2-PLY COMPACT COTTON,
125 G/M²

SPLIT BACK YOKE

TAPED MAIN-SEAMS (NO WRINKLES)

TALL, 4 MM-THICK BUTTONS

SINGLE ANGLE CUFF,
W. CUFFLINK HOLE

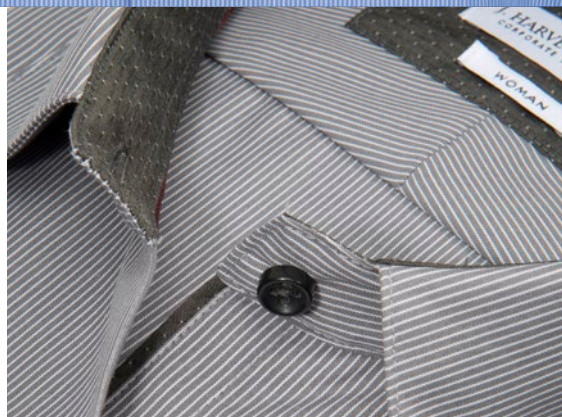
FLAT FRONT PLACKET

CURVED HEM

RED BOW 24 REGULAR 2902401 ♂ S-4XL
 RED BOW 24 SLIM 2902402 ♂ XS-XXL
 RED BOW 24 WOMAN 2902403 ♀ XS-4XL

White thin stripes on a blue or grey anthracite base, makes it a stylish new version of the classic striped shirt. The shirt can perfectly match with all colors and patterns, and is an excellent choice if you should add some colors to your standard white & blue wardrobe. The shirt is crafted in our favorite fine-twill fabric, for perfect performance. We added modern contrast details together with standard features like semi cut away collar, flat front, angle cuff and a split yoke in the back. The shirt is well-designed to take you from the office to the dinner party in one day.

849 KR



FABRICATION FACTS

FABRIC
 100% LONG STAPLE 2-PLY
 COMPACT COTTON. STRIPED
 POPLIN WEAVE. 125 G/M².

DETAILS
 THREADS, BUTTONS & LABELS:
 RECYCLED POLYESTER
 COLLAR RIBBON: POLYESTER

PACKAGING:
 FSC MIX PAPER/ RECYCLABLE
 POLYESTER






WRINKLE RESIST
6/6


STRETCH
0/6


WEIGHT
125 G/M²

FEATURES


NON-IRON

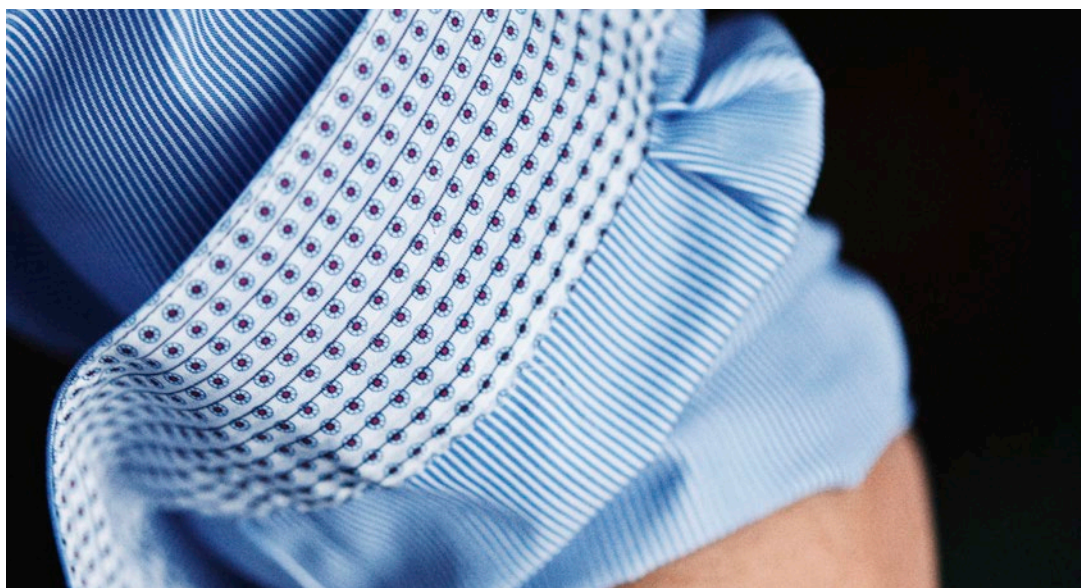
RED BOW 24



551 MIDBLUE STRIPE



951 GREY STRIPE





SEMI CUT-AWAY COLLAR

MECHANICAL STRETCH

NON-IRON

SOLID COLORS WITH MODERATE CONTRASTS.

100% LONG STAPLE MIRCRO-CORD BEDFORD STRUCTURE, 130 G/M²

SPLIT BACK YOKE

TAPED MAIN-SEAMS (NO WRINKLES)

TALL, 4 MM-THICK BUTTONS

SINGLE ANGLE CUFF, W. CUFFLINK HOLE

FLAT FRONT PLACKET

CURVED HEM

RED BOW 29 REGULAR 2902901 ♂ S-4XL
 RED BOW 29 SLIM 2902902 ♂ XS-XXL
 RED BOW 29 WOMAN 2902903 ♀ XS-4XL

The Bedford micro-cord structure in solid color gives the shirt class, and are well recommended for either business or a bit less formal occasions.
 The fabric is well known for us, and is aiming to be one of our top 3 classics.
 This time we added our new natural mechanical stretch performance to it. It allows the fabric to hold top grade non-iron performance, and ads greater movement with up to 12 % stretch the weft way.
 The typical Redbow line-shirt. Classical, yet detailed, giving the shirt a modern sophisticated look.

849 KR



FABRICATION FACTS

FABRIC
 100% LONG STAPLE MIRCRO-CORD BEDFORD STRUCTURE, 130 G/M².

DETAILS
 THREADS, BUTTONS & LABELS: RECYCLED POLYESTER
 COLLAR RIBBON: POLYESTER

PACKAGING:
 FSC MIX PAPER/RECYCLABLE POLYESTER







WRINKLE RESIST
6/6


STRETCH
2/6


WEIGHT
130 G/M²

FEATURES


NON-IRON


LONGLASTING WHITE


MECHANICAL STRETCH

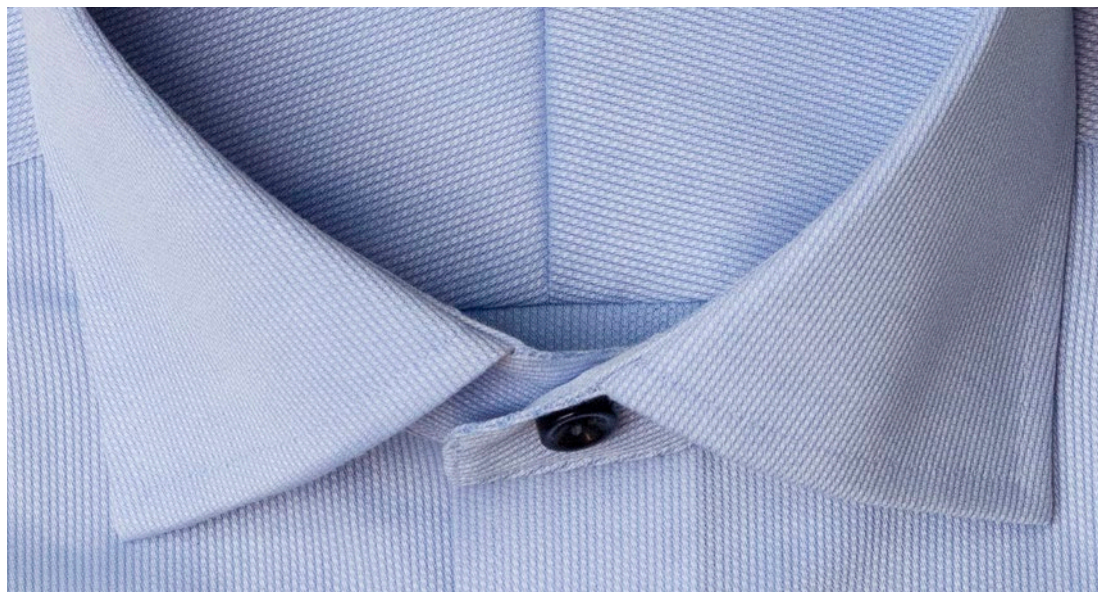
RED BOW 29

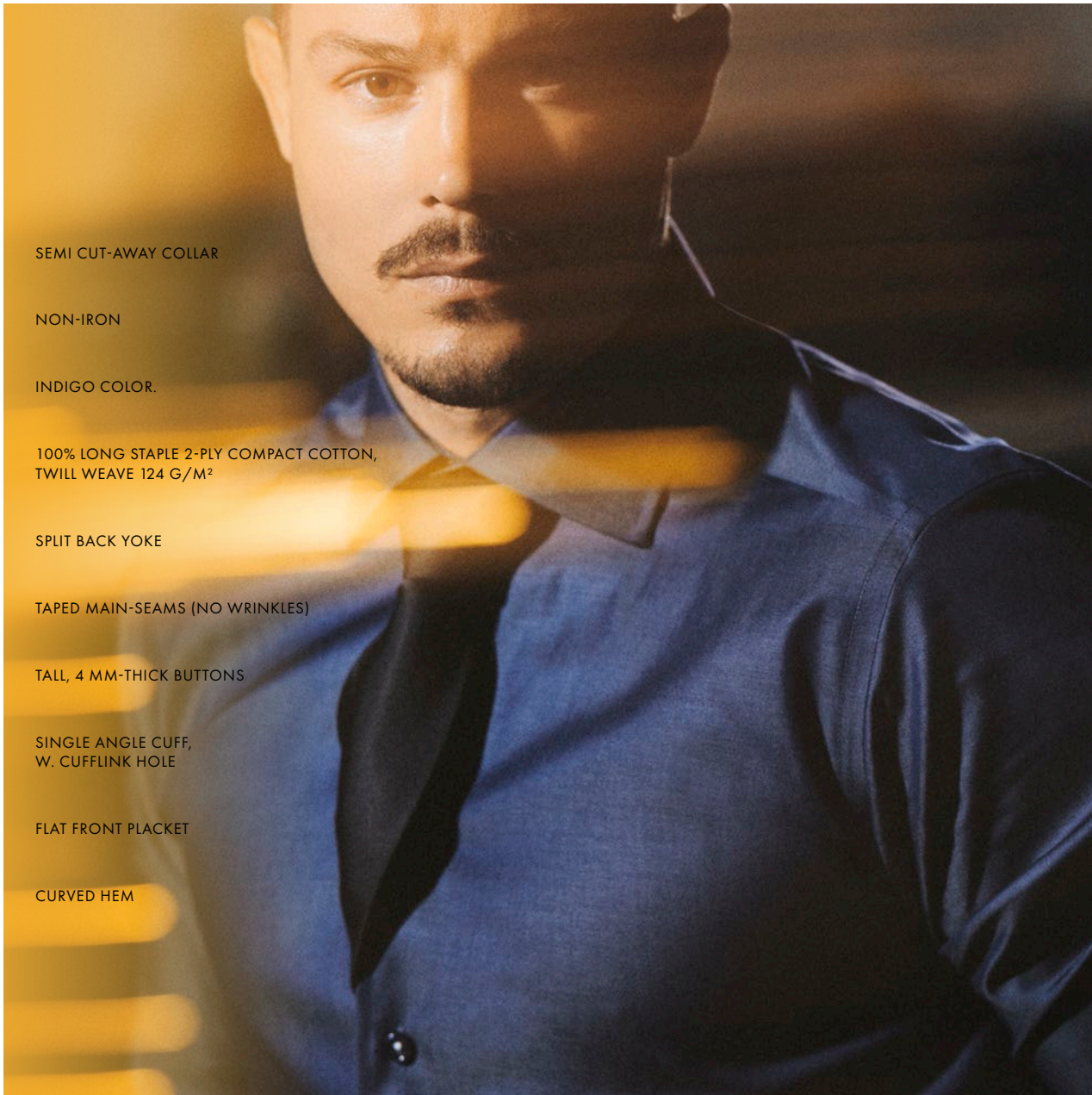


100 WHITE



500 SKY BLUE





SEMI CUT-AWAY COLLAR

NON-IRON

INDIGO COLOR.

100% LONG STAPLE 2-PLY COMPACT COTTON,
Twill Weave 124 G/M²

SPLIT BACK YOKE

TAPED MAIN-SEAMS (NO WRINKLES)

TALL, 4 MM-THICK BUTTONS

SINGLE ANGLE CUFF,
W. CUFFLINK HOLE

FLAT FRONT PLACKET

CURVED HEM



RED BOW 120 REGULAR 2912001 ♂	S-4XL
RED BOW 120 SLIM 2912002 ♂	XS-XXL
RED BOW 120 WOMAN 2912003 ♀	XS-4XL

The perfect shirt for any occasion. With the characteristic indigo color, our famous non-iron fine twill fabric can remind you of a smart “jeans shirt”. It is set up with a tone in tone paisley contrast pattern in collar & cuff, and white details in placket & button tread.

The typical Redbow line-shirt. Classical, yet detailed, giving the shirt a modern sophisticated look.

849 KR



FABRICATION FACTS

FABRIC
100% LONG STAPLE 2-PLY COMPACT COTTON, TWILL WEAVE 124 G/M ² .
DETAILS
THREADS, BUTTONS & LABELS: RECYCLED POLYESTER COLLAR RIBBON: POLYESTER
PACKAGING:
FSC MIX PAPER/RECYCLABLE POLYESTER






WRINKLE RESIST
6/6


STRETCH
0/6


WEIGHT
124 G/M²

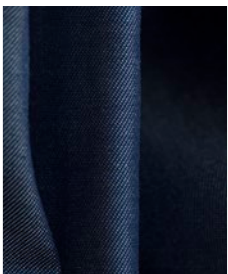
FEATURES

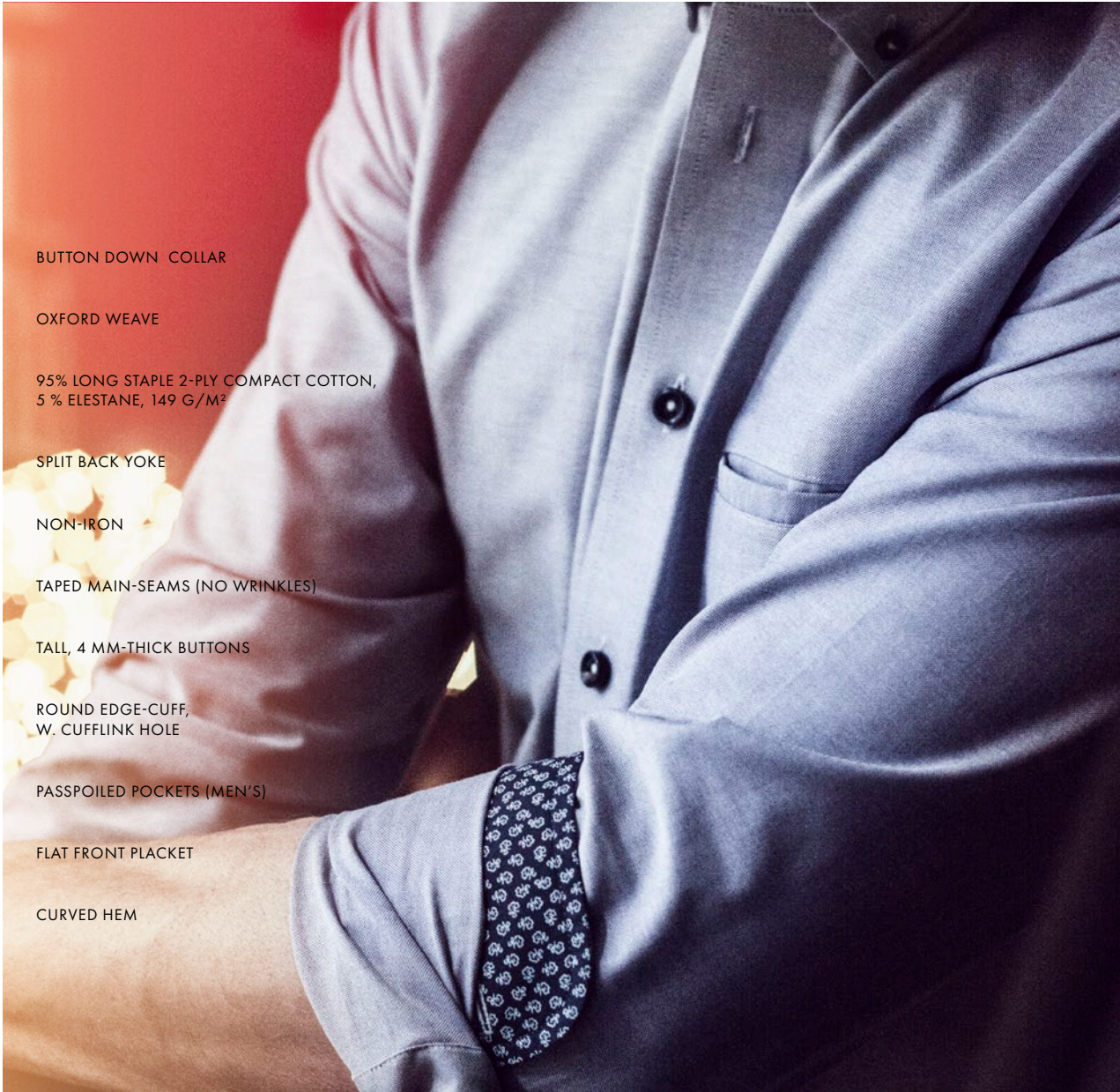

NON-IRON

RED BOW 120



550 INDIGO





BUTTON DOWN COLLAR

OXFORD WEAVE

95% LONG STAPLE 2-PLY COMPACT COTTON,
5% ELESTANE, 149 G/M²

SPLIT BACK YOKE

NON-IRON

TAPED MAIN-SEAMS (NO WRINKLES)

TALL, 4 MM-THICK BUTTONS

ROUND EDGE-CUFF,
W. CUFFLINK HOLE

PASSPOILED POCKETS (MEN'S)

FLAT FRONT PLACKET

CURVED HEM

RED BOW 121 REGULAR 2912101 ♂	S-4XL
RED BOW 121 SLIM 2912102 ♂	XS-XXL
RED BOW 121 WOMAN 2912103 ♀	XS-4XL

We might be one of very few brands that, at the present, can handle the combination NON IRON & STRETCH. It's a tricky combination, you see, which requires quite a lot of thinking, testing and developing to get all this performance into one single shirt. Luckily, we do enjoy the hard-work & developing. RB121 comes with stylish details, such as a passpoiled chest pocket and matching contrast colors at the right spots.

849 KR



FABRICATION FACTS

FABRIC
95% LONG STAPLE 2-PLY COMPACT COTTON, 5% ELESTANE, OXFORD WEAVE. 149 G/M ² .
DETAILS
THREADS, BUTTONS & LABELS: RECYCLED POLYESTER COLLAR RIBBON: POLYESTER
PACKAGING:
FSC MIX PAPER/RECYCLABLE POLYESTER






WRINKLE RESIST
5/6


STRETCH
4/6


WEIGHT
149 G/M²

FEATURES


NON-IRON


LONGLASTING WHITE


STRETCH

RED BOW 121



100 WHITE

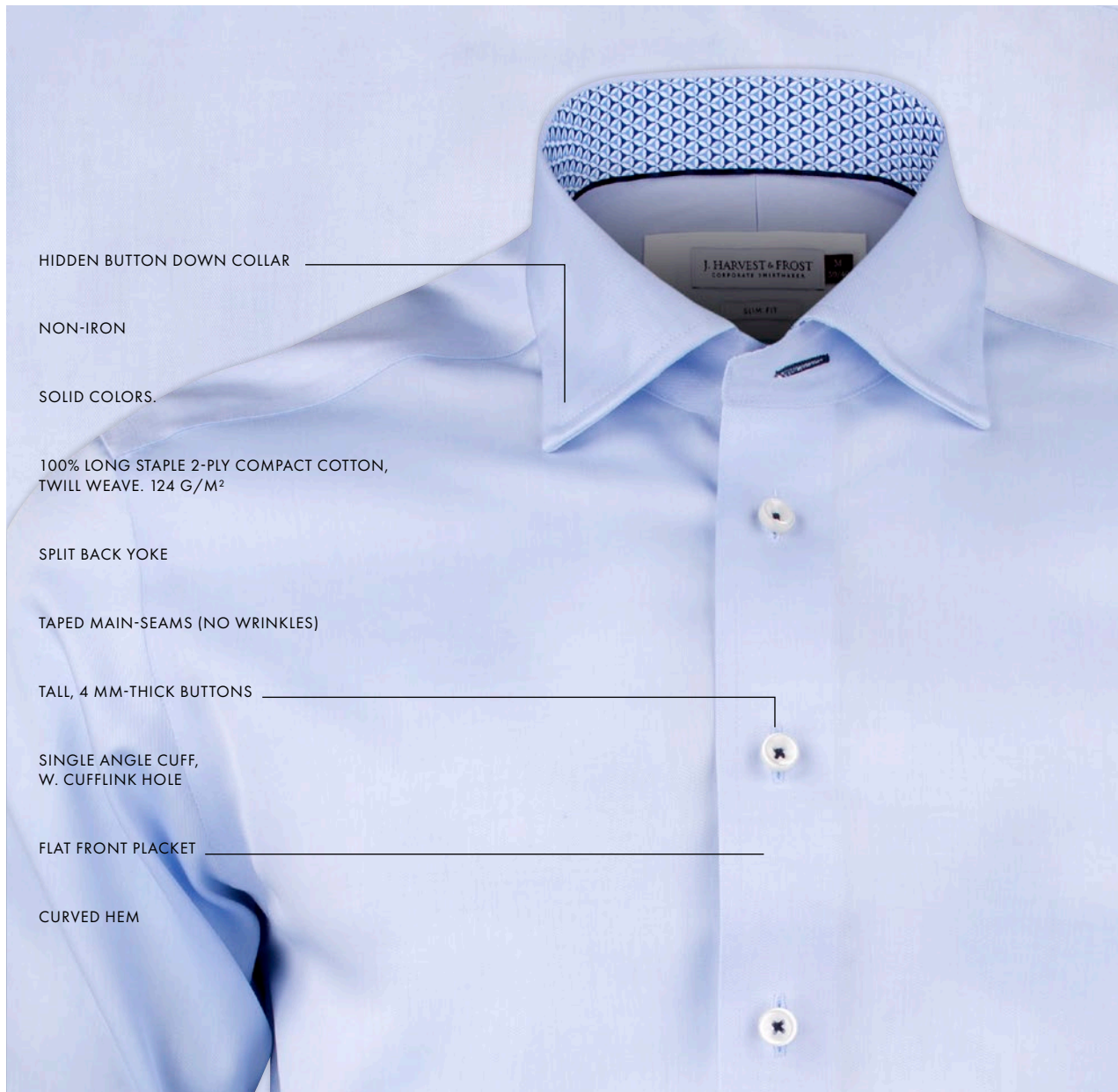
500 SKYBLUE



561 BLUE

600 NAVY





HIDDEN BUTTON DOWN COLLAR

NON-IRON

SOLID COLORS.

100% LONG STAPLE 2-PLY COMPACT COTTON,
Twill Weave. 124 G/M²

SPLIT BACK YOKE

TAPED MAIN-SEAMS (NO WRINKLES)

TALL, 4 MM-THICK BUTTONS

SINGLE ANGLE CUFF,
W. CUFFLINK HOLE

FLAT FRONT PLACKET

CURVED HEM

RED BOW 122 REGULAR 2912201 ♂
RED BOW 122 SLIM 2912202 ♂
RED BOW 122 WOMAN 2912203 ♀

S-4XL
XS-XXL
XS-4XL

J. Harvest & Frost is already in its 6th year. Many of our continuing shirts have had the time to turn into real classics. Now it's time to gently renew one of our most popular models. Red Bow 122 is a new expression of Red Bow 20. Infallible model with new, modern details and the additional new hidden button-down collar which we love so much. We are ready for a new decade.

849 KR



FABRICATION FACTS

FABRIC
100% LONG STAPLE 2-PLY
COMPACT COTTON, TWILL
WEAVE. 124 G/M².

DETAILS
THREADS, BUTTONS & LABELS:
RECYCLED POLYESTER
COLLAR RIBBON: POLYESTER

PACKAGING:
FSC MIX PAPER/RECYCLABLE
POLYESTER






WRINKLE RESIST
6/6

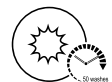

STRETCH
0/6


WEIGHT
124 G/M²

FEATURES



NON-IRON



LONGLASTING WHITE

RED BOW 122



100 WHITE



500 SKY BLUE



560 MID BLUE



911 GREY



MODERN CUTAWAY COLLAR WITH A SOFT INTERLINING AND HIDDEN BUTTON DOWN

NON-IRON

INNOVATIVE MECHANICAL STRETCH

BLUE TONED JAQUARD FABRIC, WOVEN IN A FINE MICRO-PATTERN

100% LONG STAPLED 2-PLY COMPACT COTTON. 128 G/M²

SPLIT BACK YOKE

TAPED MAIN-SEAMS (NO WRINKLES)

CLASSIC, PEARLWHITE 2,5 MM-THICK BUTTONS

SOFT ROUND EDGE CUFF, W. CUFFLINK HOLE

FLAT FRONT PLACKET
CURVED HEM

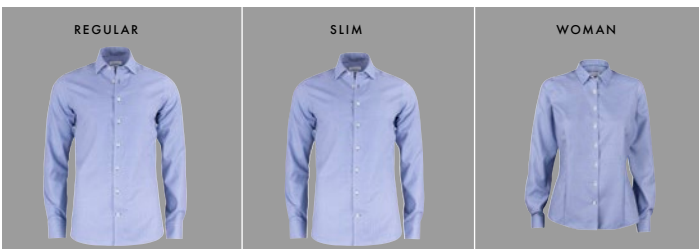


PURPLE BOW 48 REGULAR 2904801 ♂ S-4XL
PURPLE BOW 48 SLIM 2904802 ♂ XS-XXL
PURPLE BOW 48 WOMAN 2904803 ♀ XS-4XL

Blue/white patterned shirt. A double 100's jacquard fabric, with a nice modern micro-pattern. Combine it with the full suit or a more relaxed look together with jeans, either way it will serve you good.

Our newly developed fabric is made with a mechanical stretch for better comfort. The mechanical stretch is a new innovative way of giving comfort to a 100% natural long stapled, compact cotton fabric. It will give natural elasticity to the shirt of up to 12% stretch the weft way, and still keep our great NON-IRON performance. This is innovative shirt-making at its best, and we enjoy taking part of it.

949 KR



FABRICATION FACTS

FABRIC
 100% LONG STAPLED 2-PLY COMPACT COTTON. JAQUARD WEAVE. 128 G/M².

DETAILS
 THREADS, BUTTONS & LABELS: RECYCLED POLYESTER
 COLLAR RIBBON: POLYESTER

PACKAGING:
 FSC MIX PAPER/RECYCLABLE POLYESTER






WRINKLE RESIST
5/6


STRETCH
2/6


WEIGHT
128 G/M²

FEATURES

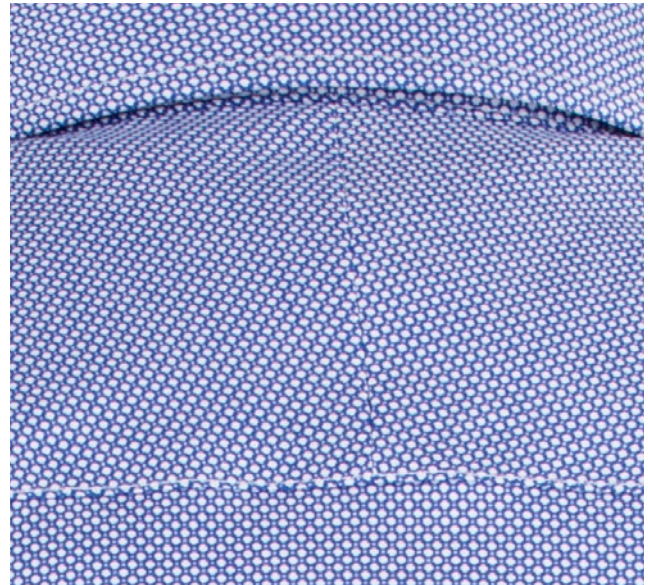

NON-IRON


MECHANICAL STRETCH

PURPLE BOW 48



566 BLUE PATTERN



MODERN CUTAWAY COLLAR WITH A SOFT INTERLINING AND HIDDEN BUTTON DOWN

INNOVATIVE MECHANICAL STRETCH

NAVY JACQUARD FABRIC , WOVEN WITH WHITE MICRO DOTS

100% LONG STAPLED 2-PLY COMPACT COTTON, 128 G/M²

SPLIT BACK YOKE

TAPED MAIN-SEAMS (NO WRINKLES)

CLASSIC, PEARLWHITE 2,5 MM-THICK BUTTONS

SOFT ROUND EDGE CUFF, W. CUFFLINK HOLE

FLAT FRONT PLACKET

CURVED HEM

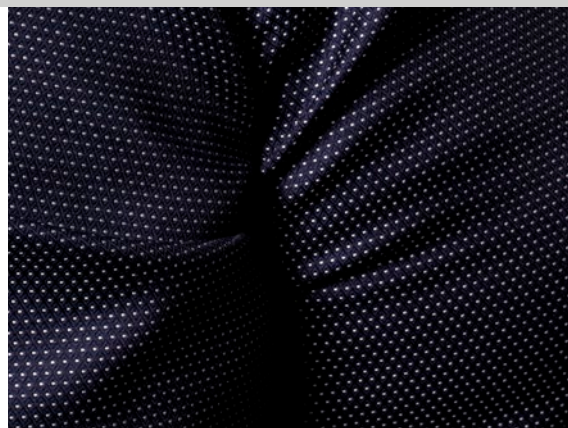


PURPLE BOW 49 REGULAR 2904901 ♂ S-4XL
 PURPLE BOW 49 SLIM 2904902 ♂ S-XXL
 PURPLE BOW 49 WOMAN 2904903 ♀ XS-4XL

A double 100's jacquard fabric, woven with white dots on navy background for a modern and sophisticated look. Combine it with the full suit or together with jeans, either way it will serve you good.

Our newly developed fabric is made with a mechanical stretch for better comfort. The mechanical stretch is a new innovative way of giving comfort to a 100% natural long stapled, compact cotton fabric. It will give natural elasticity to the shirt of up to 12% stretch the weft way, and still keep our great NON-IRON performance. This is innovative shirt-making at its best, and we enjoy taking part of it.

949 KR



REGULAR



SLIM



WOMAN



FABRICATION FACTS

FABRIC
 100% LONG STAPLED 2-PLY COMPACT COTTON. JACQUARD WEAVE. 128 G/M².

DETAILS
 THREADS, BUTTONS & LABELS: RECYCLED POLYESTER
 COLLAR RIBBON: POLYESTER

PACKAGING:
 FSC MIX PAPER/RECYCLABLE POLYESTER






WRINKLE RESIST
5/6


STRETCH
2/6


WEIGHT
128 G/M²

FEATURES



NON-IRON

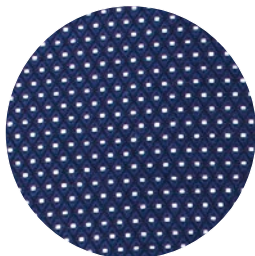


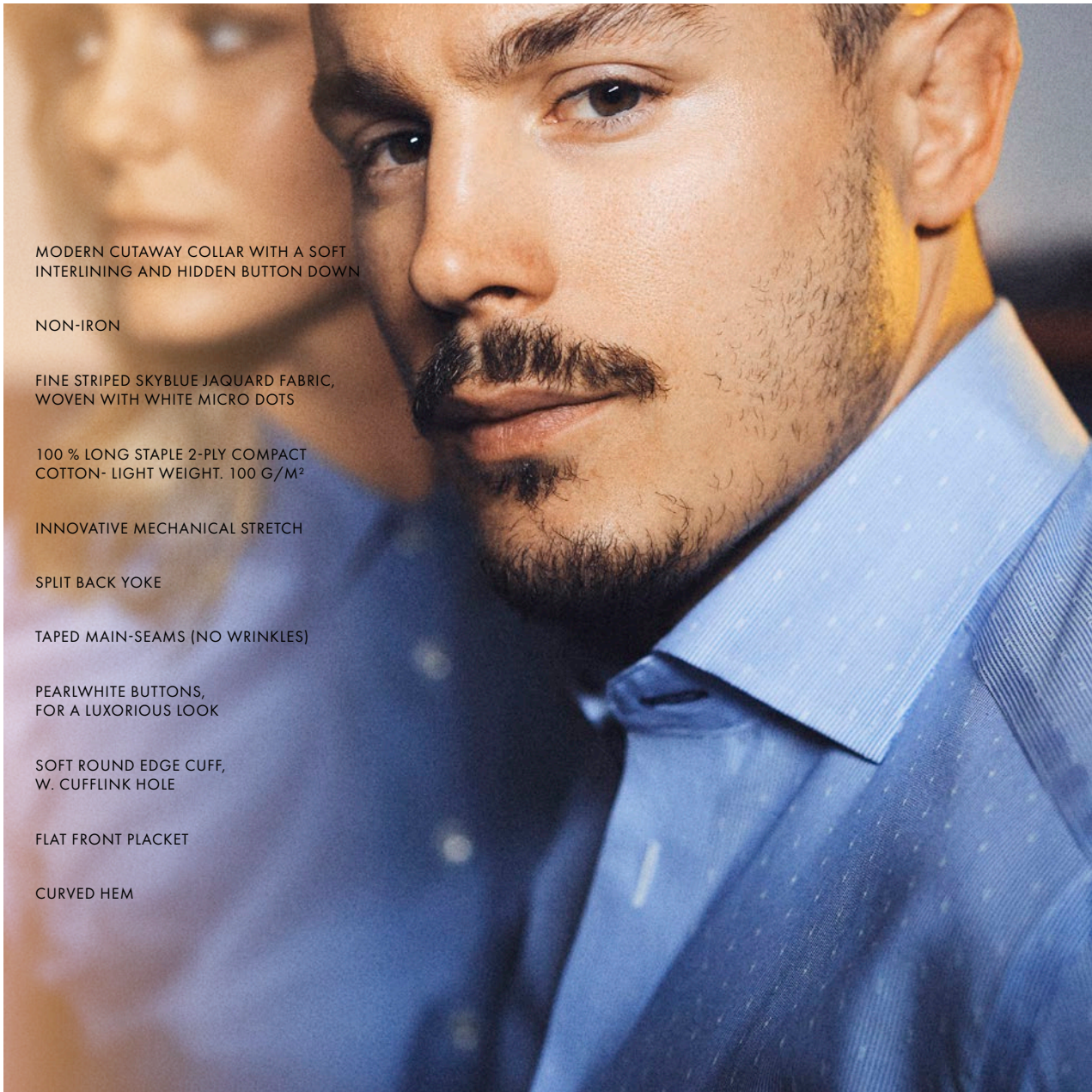
MECHANICAL STRETCH

PURPLE BOW 49



601 NAVY/WHITE DOT





MODERN CUTAWAY COLLAR WITH A SOFT INTERLINING AND HIDDEN BUTTON DOWN

NON-IRON

FINE STRIPED SKYBLUE JAQUARD FABRIC, WOVEN WITH WHITE MICRO DOTS

100 % LONG STAPLE 2-PLY COMPACT COTTON- LIGHT WEIGHT. 100 G/M²

INNOVATIVE MECHANICAL STRETCH

SPLIT BACK YOKE

TAPED MAIN-SEAMS (NO WRINKLES)

PEARLWHITE BUTTONS, FOR A LUXORIOUS LOOK

SOFT ROUND EDGE CUFF, W. CUFFLINK HOLE

FLAT FRONT PLACKET

CURVED HEM

PURPLE BOW 140 REGULAR 2914001 ♂ S-4XL
PURPLE BOW 140 SLIM 2914002 ♂ XS-XXL
PURPLE BOW 140 WOMAN 2914003 ♀ XS-4XL

A fine striped skyblue light-weight double 100's jacquard fabric, woven with white dots for a modern and sophisticated look.

Combine it with the full suit or together with jeans, either way it will serve you good.

Our newly developed fabric is made with a mechanical stretch for better comfort.

The mechanical stretch is a new innovative way of giving comfort to a 100% natural long stapled, compact cotton fabric. It will give natural elasticity to the shirt of up to 12% stretch the weft way, and still keep our great NON-IRON performance.

This is innovative shirt-making at its best, and we enjoy taking part of it.

949 KR



FABRICATION FACTS

FABRIC
 100% LONG STAPLE 2-PLY COMPACT COTTON. JAQUARD WEAVE. 100 G/M².

DETAILS
 THREADS, BUTTONS & LABELS: RECYCLED POLYESTER
 COLLAR RIBBON: POLYESTER

PACKAGING:
 FSC MIX PAPER/ RECYCLABLE POLYESTER






WRINKLE RESIST
5/6


STRETCH
2/6


WEIGHT
100 G/M²

FEATURES


NON-IRON

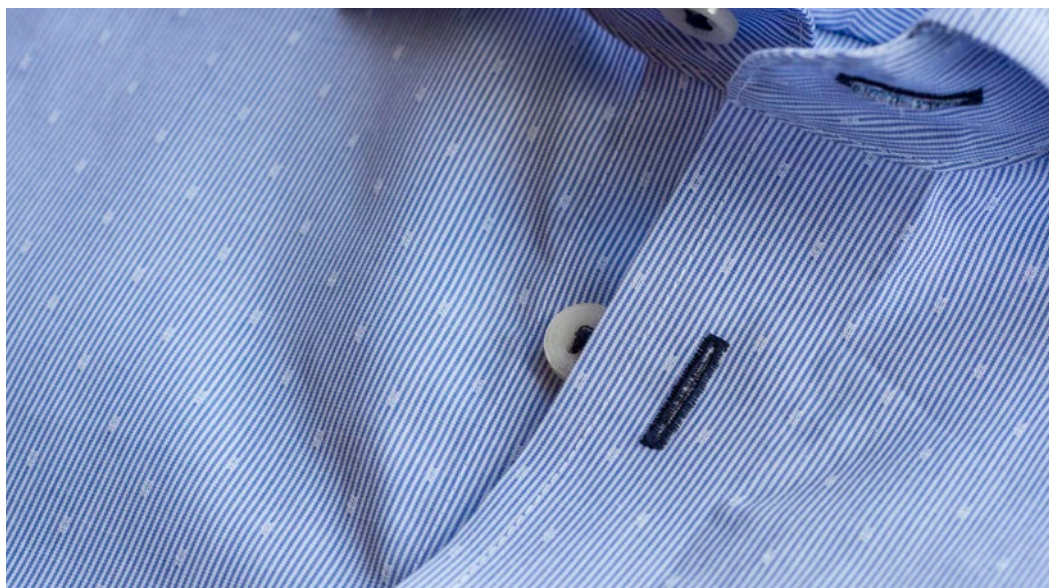

LIGHT WEIGHT


MECHANICAL STRETCH

PURPLE BOW 140



556 BLUE STRIPE/DOT





MODERN CUT-AWAY COLLAR WITH HIDDEN BUTTON DOWN

360° STRETCH

NON-IRON

MINI-CHECKS PATTERN

90% LONG STAPLE 2-PLY COMPACT COTTON, 10% ELASTANE, POPLIN WEAVE, 130 G/M²

SPLIT BACK YOKE

TAPED MAIN-SEAMS (NO WRINKLES)

CLASSIC, NAVY 2,5 MM-THICK BUTTONS

ROUND EDGE CUFF, W. CUFFLINK HOLE

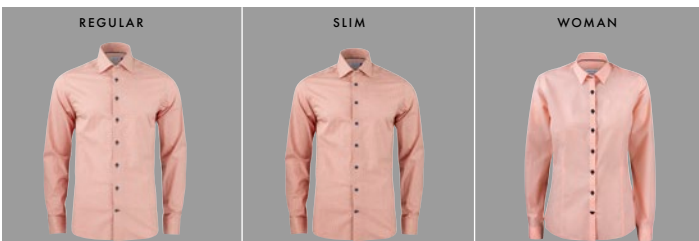
FLAT FRONT PLACKET

CURVED HEM

PURPLE BOW 141 REGULAR 2914101 ♂ S-4XL
PURPLE BOW 141 SLIM 2914102 ♂ XS-XXL
PURPLE BOW 141 WOMAN 2914103 ♀ XS-4XL

4-way stretch fabric with NON IRON treatment is another new and innovative performance made by us. With a 360 degree stretch ability, the shirt is as comfortable as a woven dress-shirt can get. It works with you in your every movement. The shirt is crafted in light-weight soft hand-touched poplin. With versatile Mini-checks, this shirt suits all looks from the office to the less formal occasions.

949 KR

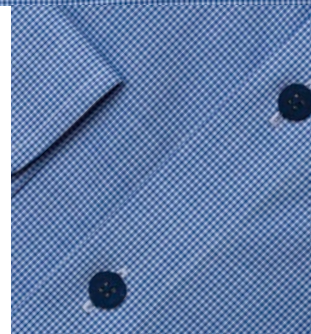


FABRICATION FACTS

FABRIC
 90% LONG STAPLE 2-PLY COMPACT COTTON, 10% ELASTANE, POPLIN WEAVE, 130 G/M².

DETAILS
 THREADS, BUTTONS & LABELS: RECYCLED POLYESTER
 COLLAR RIBBON: POLYESTER

PACKAGING:
 FSC MIX PAPER/RECYCLABLE POLYESTER






WRINKLE RESIST
5/6


STRETCH
5/6


WEIGHT
130 G/M²

FEATURES


NON-IRON


360° STRETCH

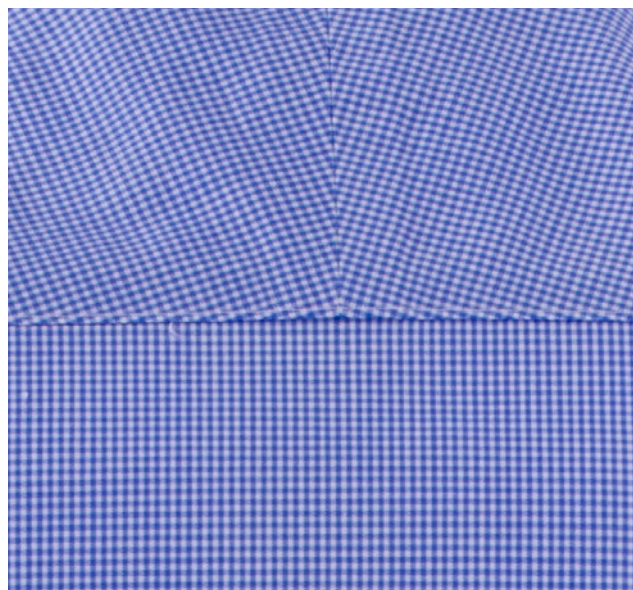
PURPLE BOW 141



313 ORANGE CHECK

515 BLUE CHECK

616 NAVY CHECK





MODERN CUT-AWAY COLLAR.
HIDDEN BUTTON DOWN

NON-IRON

FREEFIT STRETCH

2 TONE COLOR OXFORD WEAVE

96% LONG STAPLE 2-PLY COMPACT
COTTON, 4% FREE FIT STRETCH, 147 G/M²

SPLIT BACK YOKE

TAPED MAIN-SEAMS (NO WRINKLES)

TALL, 4 MM-THICK BUTTONS

ROUND EDGE CUFF,
W. CUFFLINK HOLE

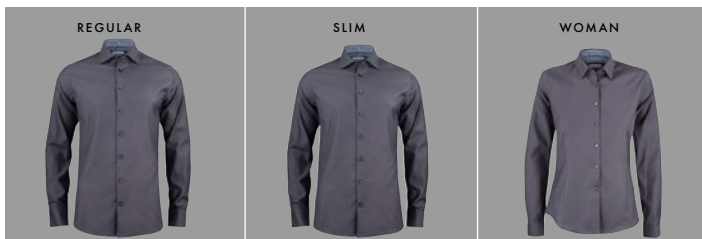
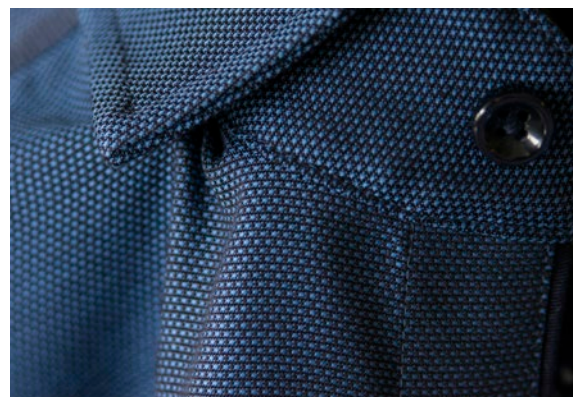
FLAT FRONT PLACKET

CURVED HEM

PURPLE BOW 142 REGULAR 2914201 ♂ S-4XL
 PURPLE BOW 142 SLIM 2914202 ♂ XS-XXL
 PURPLE BOW 142 WOMAN 2914203 ♀ XS-4XL

Two tone seasonal color of sophisticated oxford fabric with incredible 20% stretch weft way, makes this shirt soft, super comfortable & yet a Non-Iron shirt. Maybe our best take on smart-casual yet. Our guess is this model will quickly become one of your wardrobe essentials.

949 KR

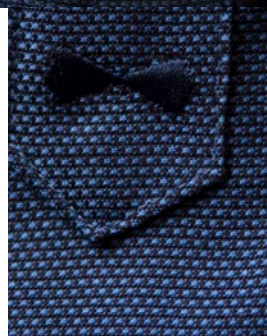


FABRICATION FACTS

FABRIC
 96% LONG STAPLE 2-PLY COMPACT COTTON, 4% FREE FIT STRETCH. 2 TONE COLOR OXFORD WEAVE 147 G/M².

DETAILS
 THREADS, BUTTONS & LABELS: RECYCLED POLYESTER
 COLLAR RIBBON: POLYESTER

PACKAGING:
 FSC MIX PAPER/ RECYCLABLE POLYESTER






WRINKLE RESIST
5/6


STRETCH
3/6


WEIGHT
147 G/M²

FEATURES


NON-IRON


FREEFIT STRETCH

PURPLE BOW 142



556 BLUE



762 GREEN



864 PURPLE



996 GREY





MODERN CUT-AWAY COLLAR

MECHANICAL STRETCH

TWO TONE INDIGO COLOR PAISLEY

100% LONG STAPLE COMPACT COTTON,
FINE TWILL, 122 G/M²

SPLIT BACK YOKE

TALL, 4 MM-THICK BUTTONS

SOFT ROUND EDGE CUFF,
W. CUFFLINK HOLE

FLAT FRONT PLACKET

CURVED HEM



PURPLE BOW 143




PURPLE BOW 143 REGULAR 2914301 ♂ S-4XL
 PURPLE BOW 143 SLIM 2914302 ♂ XS-XXL
 PURPLE BOW 143 WOMAN 2914303 ♀ XS-4XL

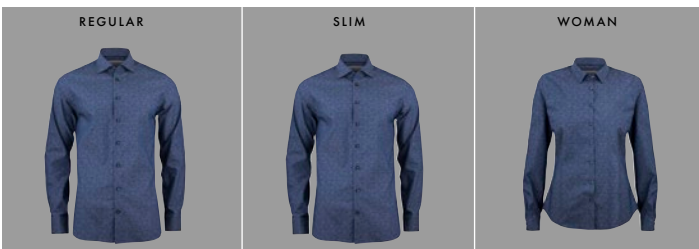
A new discrete but bold indigo colored paisley pattern shirt. Dress it up & bold with a tie, or down with your slacks, either way it lets you stay comfortable & sharp all day with our famous Non- iron and natural stretch performance. Innovation and smartness walk hand in hand!

949 KR



551 INDIGO PAISLEY

-  WRINKLE RESIST
5/6
-  STRETCH
2/6
-  WEIGHT
122 G/M²



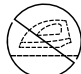
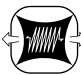
FABRICATION FACTS

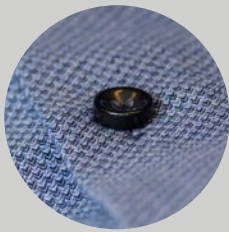
FABRIC
 100% LONG STAPLE COMPACT COTTON, FINE TWILL, 122 G/M².

DETAILS
 THREADS, BUTTONS & LABELS: RECYCLED POLYESTER
 COLLAR RIBBON: POLYESTER

PACKAGING:
 FSC MIX PAPER/RECYCLABLE POLYESTER

FEATURES

-  NON-IRON
-  MECHANICAL STRETCH



MODERN CUT-AWAY COLLAR WITH HIDDEN BUTTON DOWN

NON IRON

FREE FIT STRETCH

TWO TONE INDIGO JAQUARD PATTERN

96% COTTON, 4% FFT-STRETCH, 125 G/M²

SPLIT BACK YOKE

TALL, 4 MM-THICK BUTTONS

SOFT ROUND EDGE CUFF, W. CUFFLINK HOLE

PURPLE BOW 144

PURPLE BOW 144 REGULAR 2914401 ♂ S-4XL
 PURPLE BOW 144 SLIM 2914402 ♂ XS-XXL
 PURPLE BOW 144 WOMAN 2914403 ♀ XS-4XL

A lightweight non-iron dress shirt with brushed surface, that gives a unique, luxurious and super soft hand feeling. It has all the performance and hand feel needed with up to 20% stretch.
 The shirt has a soft modern cut-away collar with hidden button-down function. Blue details in collar cuffs and buttoning.
 Easy to wear. Smart & casual.

949 KR



556 INDIGO

- WRINKLE RESIST 4/6
- STRETCH 3/6
- WEIGHT 125 G/M²



FABRICATION FACTS

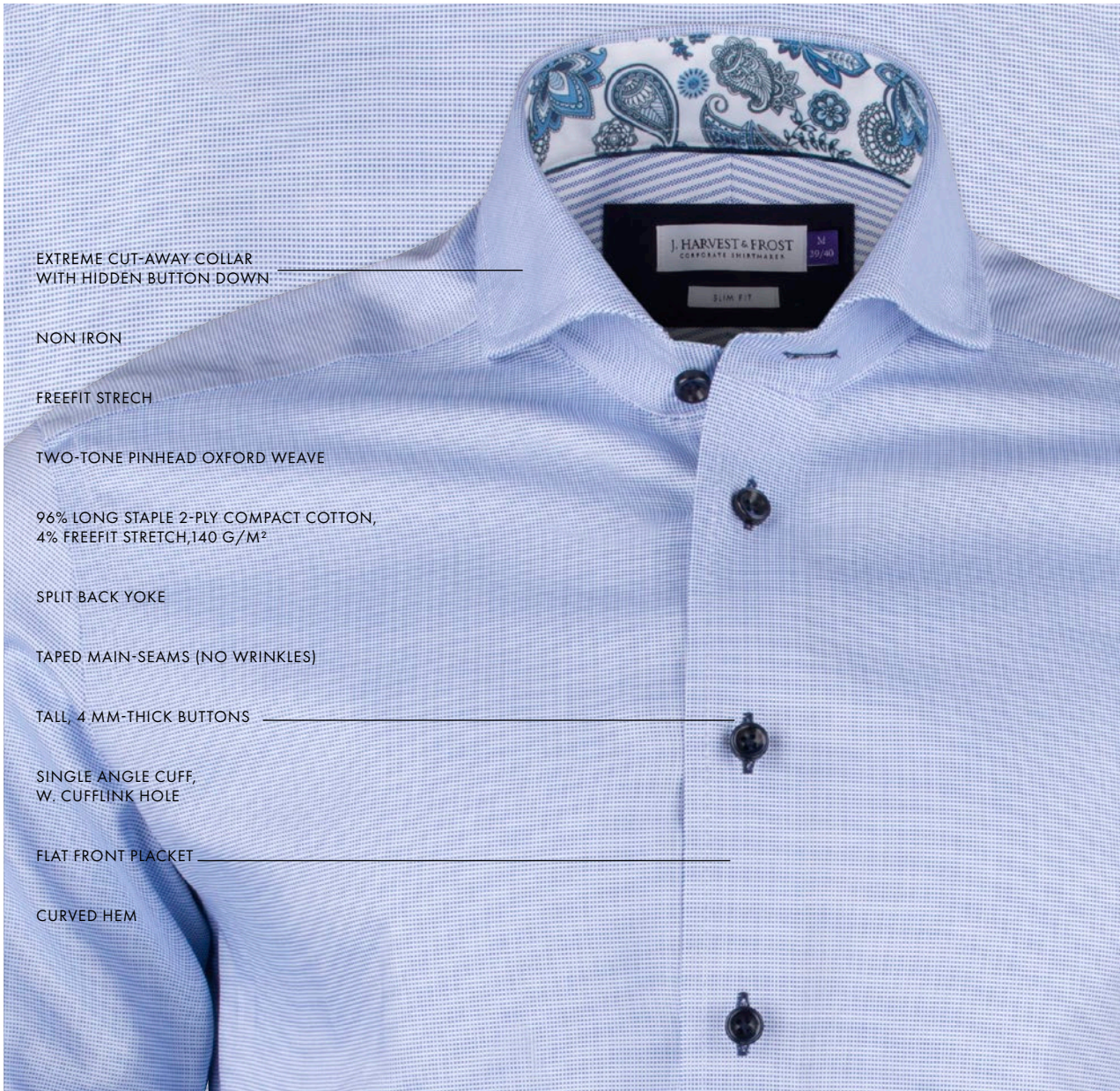
FABRIC
 96% COTTON, 4% FFT-STRETCH, JAQUARD PATTERN, 125 G/M².

DETAILS
 THREADS, BUTTONS & LABELS: RECYCLED POLYESTER
 COLLAR RIBBON: POLYESTER

PACKAGING:
 FSC MIX PAPER/RECYCLABLE POLYESTER

FEATURES

- NON-IRON
- FREEFIT STRETCH
- SUPERSOFT



EXTREME CUT-AWAY COLLAR
WITH HIDDEN BUTTON DOWN

NON IRON

FREEFIT STRECH

TWO-TONE PINHEAD OXFORD WEAVE

96% LONG STAPLE 2-PLY COMPACT COTTON,
4% FREEFIT STRECH,140 G/M²

SPLIT BACK YOKE

TAPED MAIN-SEAMS (NO WRINKLES)

TALL, 4-MM-THICK BUTTONS

SINGLE ANGLE CUFF,
W. CUFFLINK HOLE

FLAT FRONT PLACKET

CURVED HEM

PURPLE BOW 145 REGULAR 2914501 ♂ S-4XL
 PURPLE BOW 145 SLIM 2914502 ♂ XS-XXL
 PURPLE BOW 145 WOMAN 2914503 ♀ XS-4XL

Sharp, colorful & playful is the definition of our PB145.
 A two-tone pinhead oxford weave gives the shirt a luxurious structure, the extreme cut-away collar sets the edge, and the modern, colorful contrast details, play's it off.
 What you cannot see behind the scenes, is of course where the real magic happens.
 PB145 performs with comfortable STRETCH & NON IRON effect, like none other.
 Purple Bow at it's best.

949 KR



FABRICATION FACTS

FABRIC
 96% LONG STAPLE 2-PLY
 COMPACT COTTON, 4% FREEFIT
 STRECH,140 G/M².

DETAILS
 THREADS, BUTTONS & LABELS:
 RECYCLED POLYESTER
 COLLAR RIBBON: POLYESTER

PACKAGING:
 FSC MIX PAPER/RECYCLABLE
 POLYESTER






WRINKLE RESIST
5/6


STRETCH
3/6

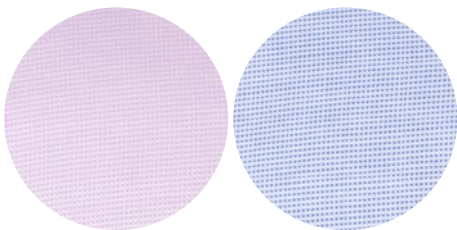

WEIGHT
140 G/M²

FEATURES


NON-IRON


FREEFIT STRETCH

PURPLE BOW 145



451 PINK

561 MID BLUE





BUTTON DOWN COLLAR

DURABLE WASH- PEACHED SURFACE

SOLID COLOR OXFORD WEAVE.

100 % COTTON, 160 G/M².

SPLIT BACK YOKE

CHEST POCKET ON MENS STYLE

NATURAL WHITE BUTTONS

EDGE BARREL CUFF, W. CUFFLINK HOLE

RAISED PLACKET

CURVED HEM

- INDIGO BOW 30 REGULAR 2903001 ♂ S-4XL
- INDIGO BOW 30 SLIM 2903002 ♂ S-XXL
- INDIGO BOW 30 WOMAN 2903003 ♀ XS-4XL

Our indigo bow oxford shirt is crafted of carefully selected fabric and finishing that gives the right soft and worn feeling. It is a worker-shirt that is already “worked-in”.

SEASONAL OFFER 399:-
ORD. 649:-



FABRICATION FACTS

FABRIC
100% COTTON, OXFORD WEAVE,
160 G/M².

DETAILS
THREADS, BUTTONS & LABELS:
POLYESTER
COLLAR RIBBON: POLYESTER

PACKAGING:
FSC MIX PAPER/RECYCLABLE
POLYESTER





WRINKLE RESIST
2/6

STRETCH
0/6

WEIGHT
160 G/M²

FEATURES



GARMENT WASHED



SUPERSOFT

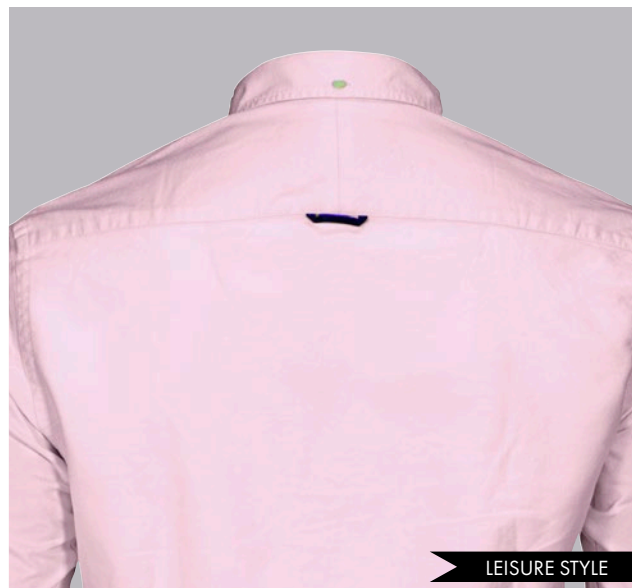


LEISURE STYLE

INDIGO BOW 30



450 PINK



LEISURE STYLE

LEISURE STYLE MODELS ARE 3 CM SHORTER THAN OUR BUSINESS MODELS



BUTTON DOWN COLLAR

DURABLE WASH- PEACHED SURFACE

CLASSIC STRIPED PATTERN OXFORD WEAVE.

100 % COTTON,160 G/M².

SPLIT BACK YOKE

CHEST POCKET ON MENS STYLE

NATURAL WHITE BUTTONS

EDGE BARREL CUFF, W. CUFFLINK HOLE

RAISED PLACKET

CURVED HEM

INDIGO BOW 32 REGULAR 2903201 ♂ S-4XL
 INDIGO BOW 32 SLIM 2903202 ♂ S-XXL
 INDIGO BOW 32 WOMAN 2903203 ♀ XS-4XL

Our indigo bow oxford shirt is crafted of carefully selected fabric and finishing that gives the right soft and worn feeling. It is a worker-shirt that is already "worked-in".

SEASONAL OFFER 399:-
 ORD. 649:-



FABRICATION FACTS

FABRIC
 100% COTTON, OXFORD WEAVE,160 G/M².

DETAILS
 THREADS, BUTTONS & LABELS: POLYESTER
 COLLAR RIBBON: POLYESTER

PACKAGING:
 FSC MIX PAPER/RECYCLABLE POLYESTER





WRINKLE RESIST
2/6

STRETCH
0/6

WEIGHT
160 G/M²

FEATURES



GARMENT WASHED



SUPERSOFT



LEISURE STYLE

INDIGO BOW 32



501 LIGHT BLUE



LEISURE STYLE

LEISURE STYLE MODELS ARE 3 CM SHORTER THAN OUR BUSINESS MODELS



SMALL CUT-AWAY COLLAR. LIGHTWEIGHT INTERLINING FOR SOFT TOUCH

SUPERSOFT GARMENT WASH

2 TONE PLAIN WEAVE

100% LINEN, 119 G/M²

SPLIT BACK YOKE

CLASSIC, 2,5 MM-THICK BUTTONS

SOFT ROUND EDGE CUFF, W. CUFFLINK HOLE

RAISED PLACKET

CURVED HEM

INDIGO BOW 33 REGULAR 2903301 ♂ S-4XL
 INDIGO BOW 33 SLIM 2903302 ♂ XS-XXL
 INDIGO BOW 33 WOMAN 2903303 ♀ XS-4XL

“Summer in a shirt”. Tropical colors, authentic, characteristic wrinkling texture, casual, refined, vacation. All words describing our classical airy open weaved 100% linen shirt. The only shirt that deserves to be wrinkled and looks better this way. The shirt ages with beauty and only improves over time. So grab your gear, and get ready for summer.

899 KR



FABRICATION FACTS

FABRIC
 100% LINEN, 2 TONE PLAIN WEAVE. 119 G/M².

DETAILS
 THREADS, BUTTONS & LABELS: RECYCLED POLYESTER
 COLLAR RIBBON: POLYESTER

PACKAGING:
 FSC MIX PAPER/RECYCLABLE POLYESTER





WRINKLE RESIST
1/6

STRETCH
0/6

WEIGHT
119 G/M²

FEATURES



BREATHABLE



GARMENT WASHED



SUPERSOFT



LONGLASTING WHITE



LEISURE STYLE

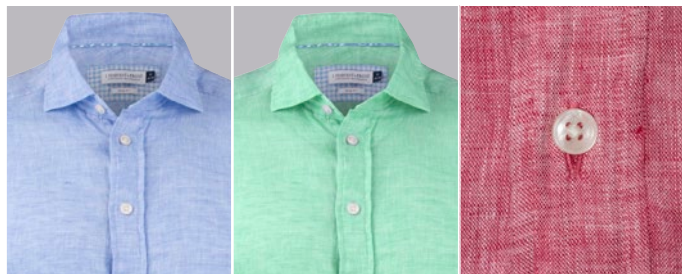
INDIGO BOW 33



100 WHITE

310 ORANGE

410 RED



510 SKYBLUE

710 GREEN



LEISURE STYLE

LEISURE STYLE MODELS ARE 3 CM SHORTER THAN OUR BUSINESS MODELS



MODERN CUT-AWAY COLLAR WITH HIDDEN BUTTON DOWN

360° STRETCH

SOLID COLORS.

100% LONG STAPLE 2-PLY COMPACT COTTON, PIQUÉ-KNITTED, 159 G/M²

SPLIT BACK YOKE

SOFT ROUND EDGE PEARLWHITE BUTTONS, FOR A LUXURIOUS LOOK

SOFT ROUND EDGE CUFF, W. CUFFLINK HOLE

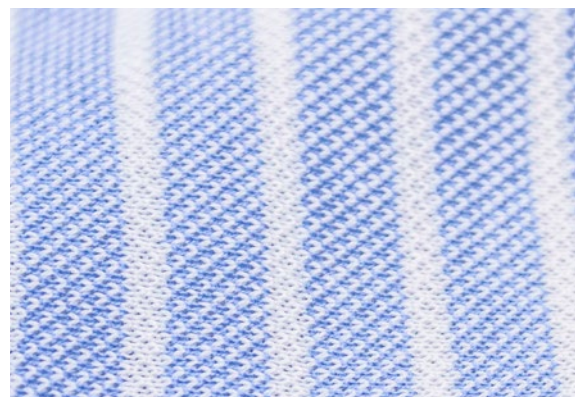
FLAT FRONT PLACKET

CURVED HEM

INDIGO BOW 34 REGULAR 2903401 ♂ S-4XL
 INDIGO BOW 34 SLIM 2903402 ♂ XS-XXL
 INDIGO BOW 34 WOMAN 2903403 ♀ XS-4XL

It has the look of a classic woven dress shirt, but indeed it is a knitted shirt. Combining the best from two worlds, makes this the world's most comfortable good looking dress shirt. It is like wearing a t-shirt, incredible comfort. We makes this happen by using high-end double 60 compact yarn, and a soft treatment. This gives the shirt a luxurious out-view and silky touch. Also, when using high quality yarn in a knitted fabric, you get a natural non-iron performance, so you simply wash it, hang dry it and wear it. We have strong confident in this new and innovative way of making fine-shirts. And by this we are looking forward to develop more colors and patterns to the knitted program. Enjoy!

899 KR



FABRICATION FACTS

FABRIC
 100% LONG STAPLE 2-PLY COMPACT COTTON, PIQUÉ-KNITTED, 159 G/M².

DETAILS
 THREADS, BUTTONS & LABELS: RECYCLED POLYESTER
 COLLAR RIBBON: POLYESTER

PACKAGING:
 FSC MIX PAPER/RECYCLABLE POLYESTER





WRINKLE RESIST
4/6

STRETCH
6/6

WEIGHT
159 G/M²

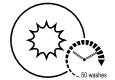
FEATURES



KNITTED FABRIC



360° STRETCH



LONGLASTING WHITE



SMART CASUAL

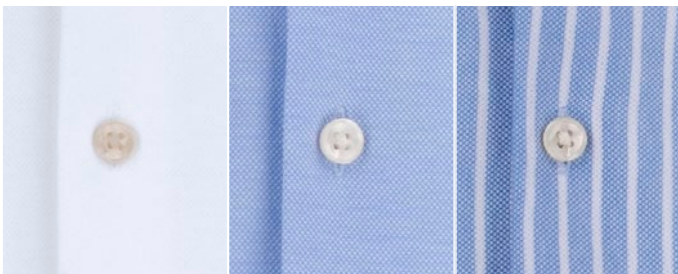
INDIGO BOW 34



100 WHITE

500 SKYBLUE

550 BLUE-/WHITE STRIPE



SMART CASUAL

THESE SHIRTS ARE 3 CM SHORTER THAN OUR REGULAR BUSINESS MODELS



SOFT MODERN CUT-AWAY COLLAR
WITH HIDDEN BUTTON-DOWN

EASY CARE

NAVY BACKGROUND WITH
WHITE FLORAL PRINT

100% COMPACT COTTON, POPLIN WEAVE,
95 G/M²

SPLIT BACK YOKE

TALL, 4 MM-THICK BUTTONS

SOFT ROUND EDGE CUFF,
W. CUFFLINK HOLE

FLAT FRONT PLACKET

CURVED HEM

INDIGO BOW 37 REGULAR 2903701 ♂ S-4XL
 INDIGO BOW 37 SLIM 2903702 ♂ XS-XXL
 INDIGO BOW 37 WOMAN 2903703 ♀ XS-4XL

An elegant, bold & modern paisley shirt, printed on a crisp and super light poplin fabric. This stylish shirt has a soft modern cut-away collar with hidden button-down function and Easy-care fabric performance.

899 KR



FABRICATION FACTS

FABRIC
 100% COMPACT COTTON,
 POPLIN WEAVE, 95 G/M².

DETAILS
 THREADS, BUTTONS & LABELS:
 RECYCLED POLYESTER
 COLLAR RIBBON: POLYESTER

PACKAGING:
 FSC MIX PAPER/ RECYCLABLE
 POLYESTER





WRINKLE RESIST
4/6

STRETCH
0/6

WEIGHT
95 G/M²

FEATURES



EASY CARE



LIGHT WEIGHT



LEISURE STYLE

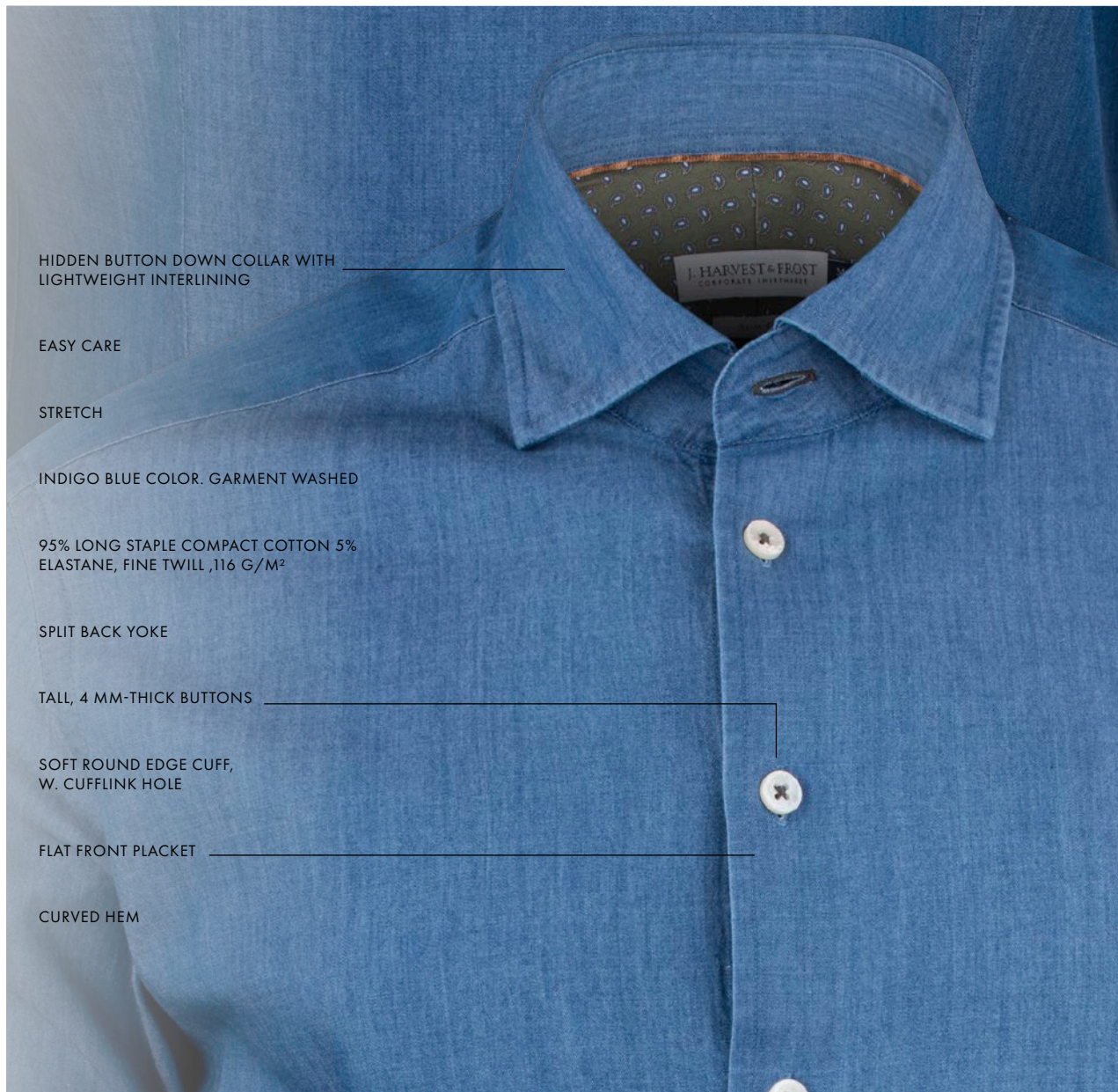
INDIGO BOW 37



601 NAVY FLORAL



LEISURE STYLE MODELS ARE 3 CM SHORTER THAN OUR BUSINESS MODELS



HIDDEN BUTTON DOWN COLLAR WITH LIGHTWEIGHT INTERLINING

EASY CARE

STRETCH

INDIGO BLUE COLOR. GARMENT WASHED

95% LONG STAPLE COMPACT COTTON 5% ELASTANE, FINE TWILL ,116 G/M²

SPLIT BACK YOKE

TALL, 4 MM-THICK BUTTONS

SOFT ROUND EDGE CUFF, W. CUFFLINK HOLE

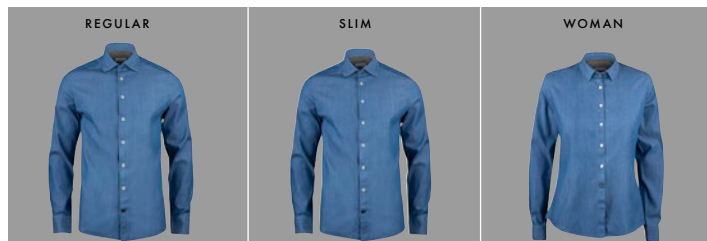
FLAT FRONT PLACKET

CURVED HEM

INDIGO BOW 130 REGULAR 2913001 ♂ S-4XL
 INDIGO BOW 130 SLIM 2913002 ♂ XS-XXL
 INDIGO BOW 130 WOMAN 2913003 ♀ XS-4XL

Indigo Bow 130 is a supersoft, light weighted, garment washed jeans shirt, with stretch and Easy Care treatment.
 Smart & casual, soft & light, comfortable & easy to care for.
 Simply a combination of all good qualities. Enjoy.

899 KR



FABRICATION FACTS

FABRIC
 95% LONG STAPLE COMPACT COTTON 5% ELASTANE, FINE TWILL, 116 G/M².

DETAILS
 THREADS, BUTTONS & LABELS: RECYCLED POLYESTER
 COLLAR RIBBON: POLYESTER

PACKAGING:
 FSC MIX PAPER/ RECYCLABLE POLYESTER





WRINKLE RESIST
4/6

STRETCH
3/6

WEIGHT
116 G/M²

FEATURES



EASY CARE



SUPERSOFT



GARMENT WASHED



STRETCH



LEISURE STYLE

INDIGO BOW 130



550 INDIGO



LEISURE STYLE MODELS ARE 3 CM SHORTER THAN OUR BUSINESS MODELS



SEMI CUT-AWAY COLLAR

EASY CARE

SOLID COLORS.

60% COTTON / 40% POLYESTER, FINE TWILL FABRIC, 134 G/M²

SPLIT BACK YOKE

TAPED MAIN-SEAMS (NO WRINKLES)

TALL, 4 MM-THICK BUTTONS

SINGLE ANGLE CUFF, W. CUFFLINK HOLE

RAISED PLACKET

CURVED HEM



YELLOW BOW 50 REGULAR 2905001 ♂ S-5XL
 YELLOW BOW 50 SLIM 2905002 ♂ XS-XXL
 YELLOW BOW 50 WOMAN 2905003 ♀ XS-4XL

Yellow bow 50 is a high performance shirt is made in in our favorite fine blended twill with an added unique Easy Care treatment. As always with taped seams and split yoke.

549 KR



YELLOW BOW 50 S/S REGULAR 2905011 ♂ S-5XL
 YELLOW BOW 50 S/S SLIM 2905022 ♂ XS-XXL

Yellow bow 50 is a high performance shirt is made in in our favorite fine blended twill with an added unique Easy Care treatment. As always with taped seams and split yoke.

529 KR





WRINKLE RESIST
4/6

STRETCH
0/6

WEIGHT
134 G/M²

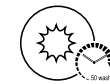
FEATURES



EASY CARE



WATER ABSORB
+ QUICK DRY



LONGLASTING WHITE



DURABLE

YELLOW BOW 50



100 WHITE



500 SKY BLUE



600 NAVY



FABRICATION FACTS

FABRIC

60% COTTON / 40% POLYESTER,
FINE TWILL FABRIC, 134 G/M².

DETAILS

THREADS, BUTTONS & LABELS:
RECYCLED POLYESTER
COLLAR RIBBON: POLYESTER

PACKAGING:

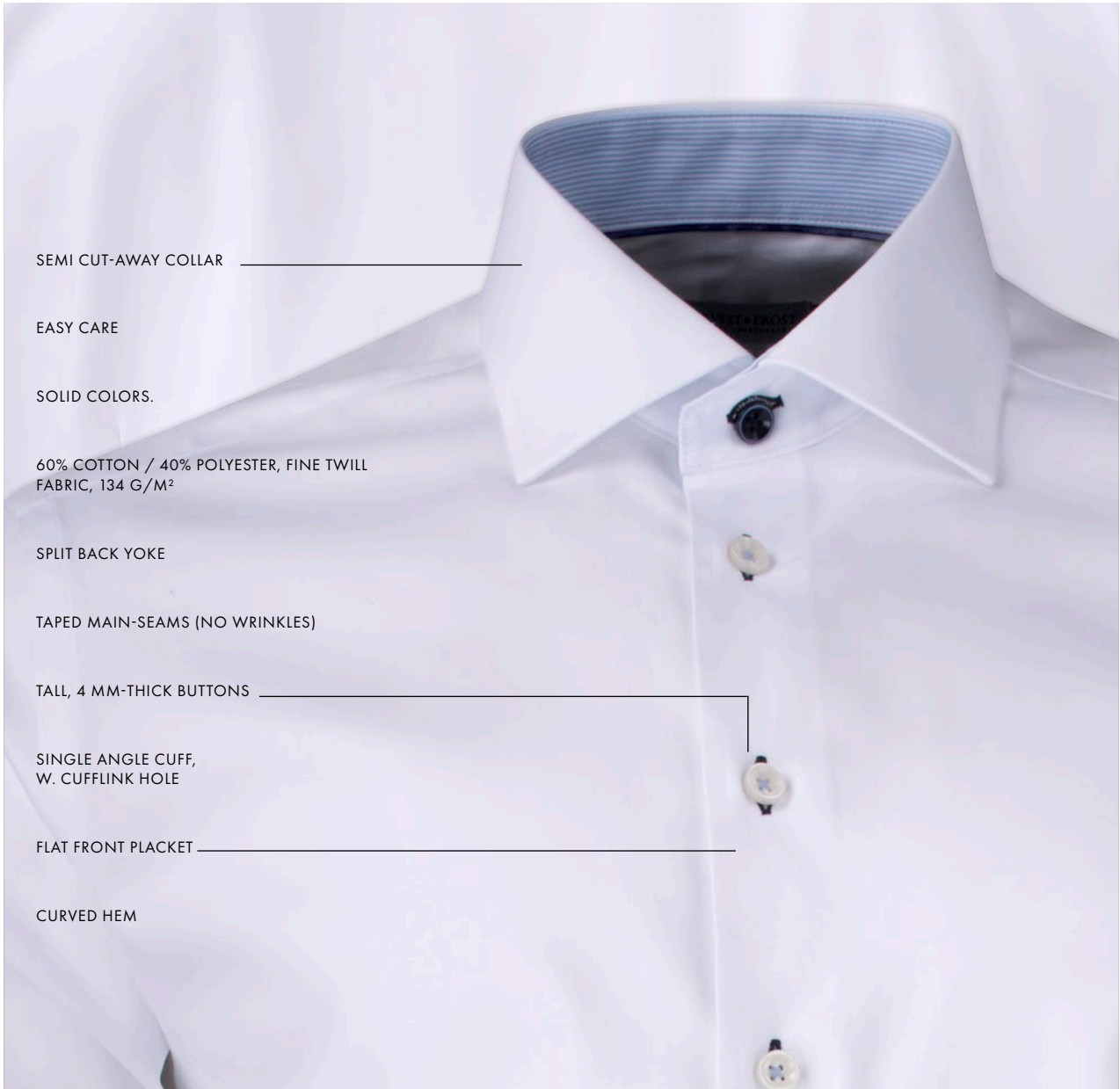
FSC MIX PAPER/BIODEGRADABLE
PLASTIC BAG



900 BLACK



955 GREY



SEMI CUT-AWAY COLLAR _____

EASY CARE

SOLID COLORS.

60% COTTON / 40% POLYESTER, FINE TWILL FABRIC, 134 G/M²

SPLIT BACK YOKE

TAPED MAIN-SEAMS (NO WRINKLES)

TALL, 4 MM-THICK BUTTONS _____

SINGLE ANGLE CUFF,
W. CUFFLINK HOLE

FLAT FRONT PLACKET _____

CURVED HEM

YELLOW BOW 51 REGULAR 2905101 ♂ **S-5XL**
YELLOW BOW 51 SLIM 2905102 ♂ **XS-XXL**
YELLOW BOW 51 WOMAN 2905103 ♀ **XS-4XL**

Yellow bow 51 is a high performance shirt is made in in a fine blended twill with an added unique Easy Care treatment and tailored details. As always with taped seams and split yoke.

579 KR



FABRICATION FACTS

FABRIC
 60% COTTON / 40% POLYESTER,
 FINE TWILL FABRIC, 134 G/M²

DETAILS
 THREADS, BUTTONS & LABELS:
 RECYCLED POLYESTER
 COLLAR RIBBON: POLYESTER

PACKAGING:
 FSC MIX PAPER/BIODEGRADABLE
 PLASTICBAG





WRINKLE RESIST
4/6

STRETCH
0/6

WEIGHT
134 G/M²

FEATURES



EASY CARE



WATER ABSORB
+ QUICK DRY



LONGLASTING WHITE



DURABLE

YELLOW BOW 51



105 WHITE/SKY BLUE

505 SKY BLUE/NAVY

555 ROYAL/NAVY



905 BLACK

955 GREY/BLACK



NEW!

SOFT MODERN CUT-AWAY COLLAR WITH HIDDEN BUTTON DOWN

EASY CARE

STRETCH

SOLID COLOR DOBBY WEAVE

22% LONG STAPLE COMPACT COTTON, 51.5% LYOCELL, 22.5% RECYCLED POLYAMIDE, 4% RECYCLED ELASTANE, 99 G/M²

SPLIT BACK YOKE

TALL, 4 MM-THICK BUTTONS

SOFT ROUND EDGE CUFF, W. CUFFLINK HOLE

RAISED PLACKET

CURVED HEM



YELLOW BOW 52 REGULAR 2905201 ♂ S-5XL
 YELLOW BOW 52 SLIM 2905202 ♂ XS-XXL
 YELLOW BOW 52 WOMAN 2905203 ♀ XS-4XL

This shirt is taking the price conscious Yellow Bow-line to the next level with its high performance and eco-conscious choice of raw materials.

A solid colored shirt with a subtle dobby structure combined with a soft collar and cuffs gives the shirt a smart & modern look. When you get the shirt in hand you will immediately recognize its more to it than catches the eye. The feather-light weight at first, silky soft hand-touch from lyocell as well, and the incredible stretch effect for your comfort, makes this shirt a master of performance. The shirt is also easy-care treated, so you can simply wash & wear it if you like.

599 KR

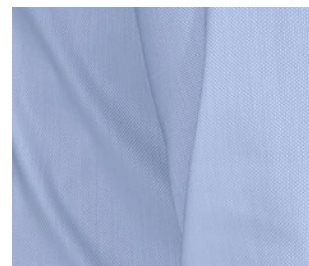


FABRICATION FACTS

FABRIC
 22% LONG STAPLE COMPACT COTTON, 51.5% LYOCELL, 22.5% RECYCLED POLYAMIDE, 4% RECYCLED ELASTANE, 99 G/M².

DETAILS
 THREADS, BUTTONS & LABELS: RECYCLED POLYESTER
 COLLAR RIBBON: POLYESTER

PACKAGING:
 FSC MIX PAPER/BIODEGRADABLE PLASTICB AG





WRINKLE RESIST
4/6

STRETCH
5/6

WEIGHT
99 G/M²

FEATURES



EASY CARE



RECYCLED MATERIALS



WATER ABSORB + QUICK DRY



LONGLASTING WHITE



DURABLE



STRETCH



GENTLE ON SKIN

YELLOW BOW 52



100 WHITE

500 SKYBLUE

900 BLACK



NEW!

SOFT MODERN CUT-AWAY COLLAR WITH HIDDEN BUTTON DOWN

EASY CARE

STRETCH

FINE TWILL WEAVE, CHECK PATTERN

22% LONG STAPLE COMPACT COTTON, 51.5% LYOCELL, 22.5% RECYCLED POLYAMIDE, 4% RECYCLED ELASTANE, 99 G/M²

SPLIT BACK YOKE

TALL, 4 MM-THICK BUTTONS

SOFT ROUND EDGE CUFF, W. CUFFLINK HOLE

FLAT FRONT PLACKET

CURVED HEM



YELLOW BOW 53 REGULAR 2905301 ♂ S-5XL
YELLOW BOW 53 SLIM 2905302 ♂ XS-XXL
YELLOW BOW 53 WOMAN 2905303 ♀ XS-4XL

This shirt is taking the price conscious Yellow Bow-line to the next level with its high performance and eco-conscious choice of raw materials. A modern check-pattern at a fine twill weave combined with soft collar and cuffs gives the shirt a smart look. When you get the shirt in hand you will immediately recognize its more to it than catches the eye. The feather-light weight at first, silky soft hand-touch from lyocell as well, and the incredible stretch effect for your comfort, makes this shirt a master of performance. The shirt is also easy-care treated, so you can simply wash & wear it if you'd like.

599 KR



FABRICATION FACTS

FABRIC
 22% LONG STAPLE COMPACT COTTON, 51.5% LYOCELL, 22.5% RECYCLED POLYAMIDE, 4% RECYCLED ELASTANE, 99 G/M².

DETAILS
 THREADS, BUTTONS & LABELS: RECYCLED POLYESTER
 COLLAR RIBBON: POLYESTER

PACKAGING:
 FSC MIX PAPER/BIODEGRADABLE PLASTICBAG





WRINKLE RESIST
6/6

STRETCH
0/6

WEIGHT
99 G/M²

FEATURES



GENTLE ON SKIN



EASY CARE



RECYCLED MATERIALS



WATER ABSORB + QUICK DRY



STRETCH



DURABLE

YELLOW BOW 53



501 SKY BLUE CHECK



601 NAVYCHECK



NEW!

CLASSIC BUTTON DOWN COLLAR

EASY CARE

STRETCH

SOLID COLORED OXFORD WEAVE

71% LONG STAPLE COTTON, 25% LYOCELL, 4% ELASTANE. 160 G/M²

SPLIT BACK YOKE

BOX PLEAT AT BACK

NATURAL PEARL WHITE, ROUND BUTTONS

SOFT ROUND EDGE CUFF,
W. CUFFLINK HOLE

CHEST POCKET ON MENS STYLE

RAISED PLACKET

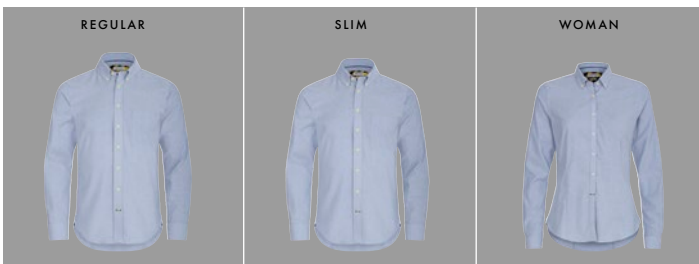
CURVED HEM



YELLOW BOW 54 REGULAR 2905401 ♂ S-5XL
YELLOW BOW 54 SLIM 2905402 ♂ XS-XXL
YELLOW BOW 54 WOMAN 2905403 ♀ XS-4XL

This leisure Oxford shirt is a new version of our classic IB 30. It has the same classic look, but is new in many other ways. The fabric is a mix of long staple cotton, Tencel (lyocell) & Elastan. This gives the shirt following performance. Luxerious handfeel and outview from the lyocell and extreme stretch comfort from elastane. The shirt has also Easy Care performance so you simply wash, grab & go. Our Leisure models are 3cm shorter than our business models.

599 KR



FABRICATION FACTS

FABRIC
 71% LONG STAPLE COTTON,
 25% LYOCELL, 4% ELASTANE.
 OXFORD WEAVE 160 G/M².

DETAILS
 THREADS, BUTTONS & LABELS:
 RECYCLED POLYESTER
 COLLAR RIBBON: POLYESTER

PACKAGING:
 FSC MIX PAPER/BIODEGRADABLE
 PLASTIC BAG





WRINKLE RESIST
4/6

STRETCH
5/6

WEIGHT
160 G/M²

FEATURES



EASY CARE



DURABLE



LONGLASTING WHITE



STRETCH



LEISURE STYLE

YELLOW BOW 54



100 WHITE



500 SKY BLUE



600 NAVY



900 BLACK



LEISURE STYLE MODELS ARE 3 CM SHORTER THAN OUR BUSINESS MODELS

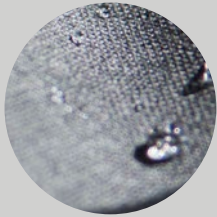
CLASSIC BLAZER 20



TURN UP CHEST POCKET
INTERIOR AS HANDKERCHIEF



ANTISTATIC FABRIC



WATER REPELLENT FINNISH



360 ° STRETCH



REGULAR



WOMAN



600 NAVY



650 NAVY MELANGE



900 BLACK



980 GREY



LIGHT WEIGHT



WATER REPELLENT



STRETCH

CLASSIC BLAZER 20 MAN 2962001 ♂ 44-62
CLASSIC BLAZER 20 WOMAN 2962003 ♀ 32-48

The water repellent high performance 4-way stretch blazer provides freedom to move in every moment. Gone are the days of stiff, uncomfortable dressing. Even let sudden changes in the weather roll right of your back with an innovative finish that actively repels water from your blazers surface. Lightweight soft rounded shoulders and light fusing together with AMF stitching at seams, gives the blazer a stylishly relaxed yet classy and formal look. Perfect for any occasion. Inside, the blazer is set up with soft viscose lining in elegant color combinations. In addition the sleeve lining is has been treated with an antibacterial finish, to help you prevent any unwanted odor during the hard working day.

86% WOOL, 8,5% POLYESTER + 5% LYCRA, 0,5% ANTISTATIC
 HIGH PERFORMANCE 4-WAY STRETCH FABRIC.
 BREATHABLE, LIGHTWEIGHT 260 GRAM
 ENVIRONMENTAL FRIENDLY WATER REPELLENT FINNISH.
 TURN UP CHEST POCKET INTERIOR AS HANDKERCHIEF
 TWO-BUTTON CLOSURE.
 DOUBLE VENTED BACK HEM FOR MAN BLAZER. (NO VENTS
 FOR WOMAN BLAZER)
 WELT POCKET AT CHEST AND 2 FLAP POCKETS AT WAIST.
 SLEEVES WITH 4 KISSING BUTTONS.
 REGULAR FIT (BETWEEN SLIM AND REGULAR) FOR BOTH
 MAN & WOMAN
 FULLY LINED. SOLID LINING IN BODY + PATTERNED LINING
 IN SLEEVE.
 4 INSIDE POCKETS.

2499 KR

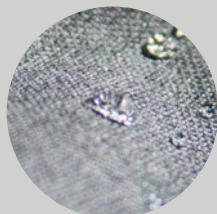
CLASSIC TROUSER



HOOK AND YKK ZIPPER



ANTISTATIC KNEE LINED



WATER REPELLENT FINNISH



360 ° STRETCH



REGULAR FIT
- STRAIGHT LEG - FLAT FRONT



600 NAVY



650 NAVY MELANGE



900 BLACK



980 GREY

CLASSIC TROUSER 2966121 ♂

44-62

These stylish flat front trousers in water repellent high performance 4-way stretch fabric provide freedom to move in every moment. It is as comfortable as it gets. Even let sudden changes in the weather roll right of with an innovative finish that actively repels water from your trousers surface. The press in trouser is carefully finished with the innovative and patented Supercreeze treatment. Which keeps the permanent press in the trouser. Soft inner waistband tailored from main fabric, allowing extra stretch for more comfortable movement. Knee lined, with soft viscose. Pair them with our classic blazer for a full suit, or solo with a crispy shirt for the smart, effortless office look.

89% WOOL, 6% POLYESTER, 5% LYCRA, 0,5% ANTISTATIC
KNEE LINED: 55% POLYESTER, 45% VISCOSE
HIGH PERFORMANCE 4-WAY STRETCH FABRIC, BREATHABLE,
LIGHTWEIGHT 260 GRAM,
ENVIRONMENTAL FRIENDLY WATER REPPPELENT FINISH.
REGULAR FIT.
STRAIGHT LEG.
FLAT FRONT.
WELT POCKET AT BACK, FRONT POCKET IN SIDE WITH AMF
STITCHING AT WAIST.
HOOK AND YKK ZIPPER IN FRONT WITH AMF STICING AT
COVER.



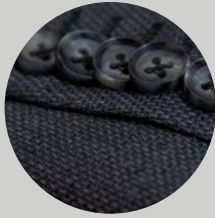
WATER REPELLENT



STRETCH

1249 KR

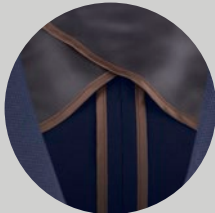
CLUB BLAZER 30



KISSING BUTTONS



TURN UP CHEST POCKET INTERIOR AS HANDKERCHIEF



HALF LINED, BUTTERFLY STYLE



70% WOOL, 30% POLYESTER FREEFIT



MAN

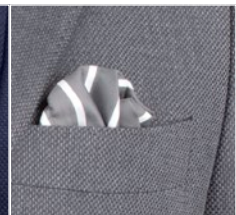
WOMAN



209 BROWN MELANGE



600 NAVY



909 GREY MELANGE



STRETCH

CLUB BLAZER 30 MAN 2963001 ♂ 44-62
CLUB BLAZER 30 WOMAN 2963003 ♀ 32-48

Our modern stretch Club blazer is made with super soft shoulders, a tailored waist and half lined butterfly interior. It features generous a notch lapel, patch side pockets, welt chest pocket and double vents in back. The fabric construction has a fairly rough out-view for a less formal yet smart vibe. Wear it with your favorite denims or combine it with our classic trouser for a contemporary, formal look.

2599 KR

70% WOOL, 30% POLYESTER FREEFIT
 8 CM NOTCH LAPEL
 TURN UP CHEST POCKET INTERIOR AS HANDKERCHIEF.
 TWO-BUTTON CLOSURE.
 NO VENTS ON WOMAN BLAZER.
 WELT POCKET AT CHEST AND 2 PATCH POCKETS AT WAIST.
 SLEEVES WITH 4 KISSING BUTTONS.
 REGULAR FIT (BETWEEN SLIM AND REGULAR) FOR BOTH MAN & WOMAN STYLES.
 HALF LINED, BUTTERFLY STYLE. SOLID COLOR LINING IN BODY + PATTERNED LINING IN SLEEVE.
 3 INSIDE POCKETS.

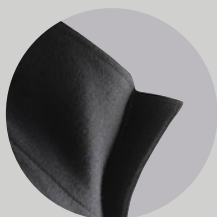




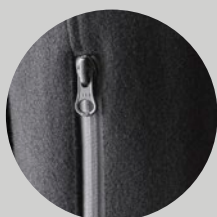
HYBRID WOOL COAT



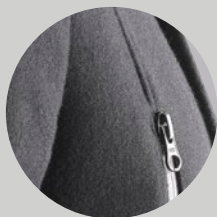
REFLECTIVE VISIBILITY DETAILS



MAGNET CLOSING AT COLLAR



WATER PROOF YKK ZIPPERS



CLASSIC WOOL FINISH



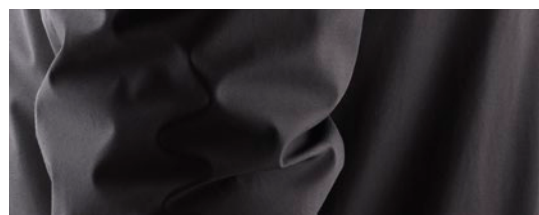
MAN



WOMAN



900 BLACK



HYBRID WOOL COAT 2990101 ♂ S-3XL
HYBRID WOOL COAT WOMAN 2990103 ♀ XS-XXL

We call it the Hybrid, as it is a mix of a typical classical wool coat and a zipped up technical jacket. We were inspired to create something different yet elegant, that had our name on it.

It has a modern stand collar, concealed front closure, chest pocket and impeccable stitching.

Well-fitted with a $\frac{3}{4}$ length, Perfect to be worn for work over a formal jacket but still nice length for your everyday leisure adventures.

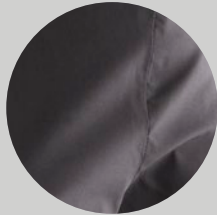
FABRIC: 60%WOOL, 25%POLYESTER, 10%VISCOSE
HIDDEN TWO WAY YKK ZIPPER IN FRONT PLACKET.
WATER PROOF YKK ZIPPERS IN SIDE + CHEST POCKET.
MAGNET CLOSING IN TOP COLLAR+ BACK SPLIT.
REFLECTIVE VISIBILITY DETAILS AT FRONT AND BACK FOR SAFETY

3499 KR

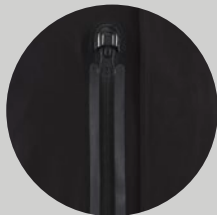
TECHNICAL CITY COAT



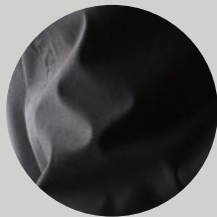
REFLECTIVE VISIBILITY DETAILS



360° STRETCH



WATER PROOF YKK ZIPPERS



INSULATION- PRIMALOFT SILVER



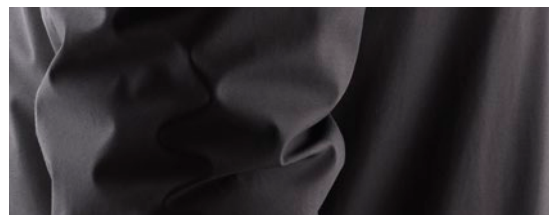
MAN



WOMAN



900 BLACK



LIGHT WEIGHT



WATER REPELLENT



360° STRETCH

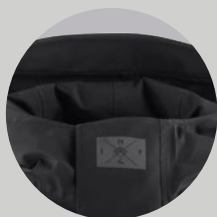
TECHNICAL CITY COAT 2990001 ♂ S-3XL
TECHNICAL CITY COAT WOMAN 2990003 ♀ XS-XXL

This is an exceptional light, comfortable and nice fitted ¾ length city-jacket. Suits any situation or weather condition, either it is on the way to a business meeting, or a late night stroll in the park. The main Technical features are 360 degree stretch, thin Primaloft-Silver insulation, water and wind proof. This highly technical, extreme lightweight car-coat is perfect for usage in the -5°C To +15°C temperature range.

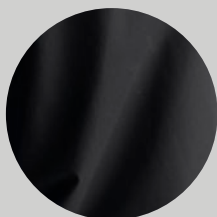
3499 KR

EXCEPTIONAL LIGHTWEIGHT 600G.
 OUTERSHELL - 87% POLYAMIDE- 13% ELESTAN.
 360 DEGREE STRETCH
 INSULATION- PRIMALOFT SILVER- 60 G.
 10 000 MM. WATER PROOFED. (WP)
 10 000 G. BREATHABILITY. (MVP)
 DWR COATED WATER REPELLENCY.
 TWO WAY YKK ZIPPER IN FRONT PLACKET.
 WATER PROOF YKK ZIPPERS AT SIDES + CHEST
 POCKET.
 REFLECTIVE VISIBILITY DETAILS AT FRONT AND
 BACK FOR SAFETY.
 MAGNET LOCKING AT PLACKET, SPLIT &
 INSIDE POCKET.

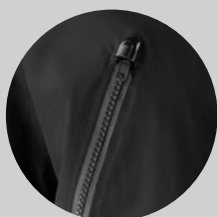
TECHNICAL PARKA



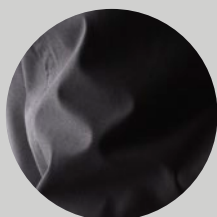
REFLECTIVE VISIBILITY DETAILS



360° STRETCH



WATER PROOF YKK ZIPPERS



INSULATION- PRIMALOFT SILVER



MAN



WOMAN



900 BLACK



TECHNICAL PARKA 2990201 ♂
TECHNICAL PARKA WOMAN 2990203 ♀

S-3XL
XS-XXL

The popularity of our technical car coat, and the good test reports, made it necessary for us to make a hooded version. And so was the parka born. It has the same technical performances as the car-coat, but we made it with a bit more bold attitude of a "big city-parka". Outside front pockets, long sloping tail in the back and more straight fit. The way you would want to wear it, providing you with the right feeling of style, luxury and versatility in any given day or occasion.

The main Technical features are 360 degree stretch, thin Primaloft-Silver insulation, water and wind proof. This highly technical, extreme lightweight parka is perfect for usage in the -15°C To +15°C temperature range.

3999 KR

EXCEPTIONAL LIGHTWEIGHT 800G.
 OUTERSHELL - 87% POLYAMIDE- 13% ELESTAN.
 360 DEGREE STRETCH
 INSULATION- PRIMALOFT SILVER- 80 G.
 10 000 MM. WATER PROOFED.
 10 000 G. BREATHABILITY.
 DWR COATED WATER REPELLENCY.
 TWO WAY YKK ZIPPER IN FRONT PLACKET.
 WATER PROOF YKK ZIPPERS AT CHEST POCKET.
 4 OUTSIDE POCKETS.
 2 BIG OUTSIDE POCKETS IN FRONT WITH FLAP COVER
 AND MAGNET LOCKING AND TWO ZIPPED POCKETS
 AT CHEST.
 REFLECTIVE VISIBILITY DETAILS AT FRONT, BACK AND
 HOOD FOR SAFETY.
 MAGNET LOCKING AT PLACKET AND SIDE POCKETS.



LIGHT WEIGHT



WATER REPELLENT



360 °STRETCH

BRIEFCASE



BRIEFCASE 2950100

This full leather briefcase is designed with multiple utility pockets and an adjustable leather shoulder strap. Our beloved J.Harvest & frost logo are embossed in front. Distinguished features like open straps in side for newspaper or umbrella, and a removable organizer made of braided elastic bands for all your gadgets.

The inside is made with lining in grey felt, computer department, and a zip pocket at the side with contrast color felt as a nice colorful detail.

Two leather top handles and detachable Leather shoulder strap.
Leather proprietor tag. 41,5 x 29,5 x 9 cm

PRIS: >10 ST: 2499 KR



DOCUMENT FOLDER 2950200

Document folder with a stylish combination of leather and felt. Our beloved J.Harvest & Frost logo are embossed nicely in the leather in the front, between 2 leather straps. They are for the convenience open, so you can place your daily newspaper there when on the run.

Inside of documenter has lining in felt and multiple open pockets. It also shows some nice contrast color of royal blue felt behind pocket, to give the documenter the little extra twist.

Leather handle at top and grey felt at sides and internal.
Metal zipper with leather zip puller. 36 x 27 x 6 cm

PRIS: >10 ST: 1299 KR

WEEKEND BAG



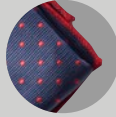
WEEKEND BAG 2950000

Your perfect travel companion crafted of durable high density cotton canvas combined with details in soft luxury leather. Other nice Features as metal zip fastening at top and detachable shoulder strap. A practical Shoe department with zipper at the side. Brushed silver finish on metal trims.

Inside bag is covered in soft striped fabric. Zipped interior pocket with stylish contrasting colored felt.

Grey canvas with black leather details and Two leather top handles.
Removable Nylon shoulder strap with leather details. 58,5 x 30,5 x 29 cm

PRIS: >10 ST: 2499 KR



301 RED/WHITE



604 NAVY/RED



706 GREEN/NAVY



806 PURPLE/NAVY



901 BLACK/WHITE

HANDKERCHIEF 2920000

Complete the look with our fabulous ties and handkerchiefs. We use high tech microfibers in these hankies. Easy to clean, hard to wrinkle and with a natural silk-looking sheen.

100% microfiber/polyester One Size

69 KR



100 WHITE



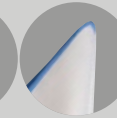
102 YELLOW



103 ORANGE



104 RED



105 LIGHT BLUE



106 NAVY



107 GREEN



109 BLACK/
WHITE



115 BLUE



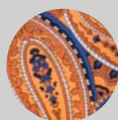
118 PURPLE

THE WHITE HANDKERCHIEF 2920100

We made this clean white hanky's in a big variety of edge-colors. Feel free to match it up with our classic double knot cufflinks to suit your occasion with style.

100% microfiber/polyester One Size

69 KR



388 ORANGE



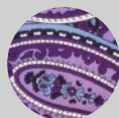
488 PINK



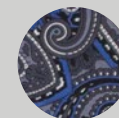
588 BLUE



788 GREEN



888 PURPLE



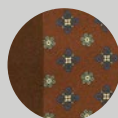
988 GREY

THE PAISLEY HANDKERCHIEF 2920300

This handsome pocket squares features a bold paisley pattern with rich colors.

100% silk One Size

149 KR



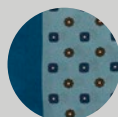
210 BROWN



710 GREEN



490 WINE



510 SKY BLUE



610 NAVY

HANDKERCHIEF SILK FLORAL 2920400

Classic silk handkerchief with floral patterns.

100% Silk One Size

149 KR



303 ORANGE 490 WINE 500 LIGHT BLUE 600 NAVY



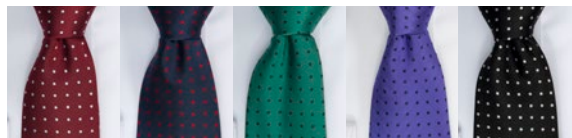
700 GREEN 900 BLACK 980 GREY 250 BROWN

TIE SILK OXFORD 2910300

Monotone silk tie with oxford weave structure.

100% Silk One Size

249 KR



301 RED/WHITE 604 NAVY/RED 706 GREEN/NAVY 806 NAVY/PURPLE 806 NAVY/PURPLE

TIE DOTTED 2910100

Complete the look with our fabulous ties and handkerchiefs. We use high tech microfibers in the ties because, well you know... You might spill that soup. Microfibers doesn't absorb. A quick rinse and voilà. Clean and as good as new.

100% microfiber One Size

129 KR



602 NAVY/BROWN 603 NAVY / WINE 607 NAVY/GREEN 608 NAVY/PURPLE

TIE STRIPED 2910200

Complete the look with our fabulous regimental striped ties. We use high tech microfibers in these ties because, well you know... You might spill that soup. Micro fibers doesn't absorb. A quick rinse and voilà. Clean and as good as new.

100% microfiber One Size

129 KR



CUFFLINKS 2940000

All of our shirts come with an extra buttonhole in the cuff, so if you prefer you can wear a set of our classic double knot on bar cufflinks. Their hand-made from soft stretch band, and comes in a big variety of colors.

Soft stretchband 10 x 10 mm

49 KR



000 MULTI COLOR

TIE BARS 2940100

We made a selection of six tie bars, to complete your smart. These colorful accessories not only ensure that you look stylish, but it also makes sure that your tie stays in place. Lift the tie up a tad above the bar, and it ensures an elegant tie draping.

Metal One Size

399 KR



600 NAVY

900 BLACK

980 GREY

SOCKS 2970104

These cotton socks have elastic knitting at the ankle and arch for a perfect fit all day.

80% Organic Cotton,
15% polyamid, 5% lycra 40-42, 43-45

79 KR



I N D E X

BLACK BOW 60 REGULAR 2906001	6	INDIGO BOW 130 WOMAN 2913003	46	RED BOW 120 WOMAN 2912003	16
BLACK BOW 60 SLIM 2906002	6	PURPLE BOW 48 REGULAR 2904801	22	RED BOW 121 REGULAR 2912101	18
BLACK BOW 60 WOMAN 2906003	6	PURPLE BOW 48 SLIM 2904802	22	RED BOW 121 SLIM 2912102	18
BRIEFCASE 2950100	66	PURPLE BOW 48 WOMAN 2904803	22	RED BOW 121 WOMAN 2912103	18
CLASSIC BLAZER 20 M 2962001	58	PURPLE BOW 49 REGULAR 2904901	24	RED BOW 122 REGULAR 2912201	20
CLASSIC BLAZER 20 W 2962003	58	PURPLE BOW 49 SLIM 2904902	24	RED BOW 122 SLIM 2912202	20
CLASSIC TROUSER 2966121	59	PURPLE BOW 49 WOMAN 2904903	24	RED BOW 122 WOMAN 2912203	20
CLUB BLAZER 30 M 2963001	60	PURPLE BOW 140 REGULAR 2914001	26	SOCKS 2970104	71
CLUB BLAZER 30 W 2963003	60	PURPLE BOW 140 SLIM 2914002	26	TECHNICAL CITY COAT 2990001	64
CUFFLINKS 2940000	71	PURPLE BOW 140 WOMAN 2914003	26	TECHNICAL CITY COAT W 2990003	64
DOCUMENT FOLDER 2950200	66	PURPLE BOW 141 REGULAR 2914101	28	TECHNICAL PARKA 2990201	65
GREEN BOW 01 REGULAR 2900101	8	PURPLE BOW 141 SLIM 2914102	28	TECHNICAL PARKA W 2990203	65
GREEN BOW 01 SLIM 2900102	8	PURPLE BOW 141 WOMAN 2914103	28	THE PAISLEY HANDKERCHIEF 2920300	69
GREEN BOW 01 WOMAN 2900103	8	PURPLE BOW 142 REGULAR 2914201	30	THE WHITE HANDKERCHIEF 2920100	68
GREEN BOW 01 W RELAXED 2900104	8	PURPLE BOW 142 SLIM 2914202	30	TIE BARS 2940100	71
HANDKERCHIEF 2920000	68	PURPLE BOW 142 WOMAN 2914203	30	TIE DOTTED 2910100	70
HANDKERCHIEF SILK FLORAL 2920400	69	PURPLE BOW 143 REGULAR 2914301	32	TIE SILK OXFORD 2910300	70
HYBRID WOOL COAT 2990101	63	PURPLE BOW 143 SLIM 2914302	32	TIE STRIPED 2910200	70
HYBRID WOOL COAT W 2990103	63	PURPLE BOW 143 WOMAN 2914303	32	WEEKEND BAG 2950000	67
INDIGO BOW 30 REGULAR 2903001	36	PURPLE BOW 144 REGULAR 2914401	33	YELLOW BOW 50 REGULAR 2905001	48
INDIGO BOW 30 SLIM 2903002	36	PURPLE BOW 144 SLIM 2914402	33	YELLOW BOW 50 SLIM 2905002	48
INDIGO BOW 30 WOMAN 2903003	36	PURPLE BOW 144 WOMAN 2914403	33	YELLOW BOW 50 S/S REG2905011	48
INDIGO BOW 32 REGULAR 2903201	38	PURPLE BOW 145 REGULAR 2914501	34	YELLOW BOW 50 S/S SLIM 2905022	48
INDIGO BOW 32 SLIM 2903202	38	PURPLE BOW 145 SLIM 2914502	34	YELLOW BOW 50 WOMAN 2905003	48
INDIGO BOW 32 WOMAN 2903203	38	PURPLE BOW 145 WOMAN 2914503	34	YELLOW BOW 51 REGULAR 2905101	50
INDIGO BOW 33 REGULAR 2903301	40	RED BOW 20 REGULAR 2902001	10	YELLOW BOW 51 SLIM 2905102	50
INDIGO BOW 33 SLIM 2903302	40	RED BOW 20 SLIM 2902002	10	YELLOW BOW 51 WOMAN 2905103	50
INDIGO BOW 33 WOMAN 2903303	40	RED BOW 20 WOMAN 2902003	10	YELLOW BOW 52 REGULAR 2905201	52
INDIGO BOW 34 REGULAR 2903401	42	RED BOW 24 REGULAR 2902401	12	YELLOW BOW 52 SLIM 2905202	52
INDIGO BOW 34 SLIM 2903402	42	RED BOW 24 SLIM 2902402	12	YELLOW BOW 52 WOMAN 2905203	52
INDIGO BOW 34 WOMAN 2903403	42	RED BOW 24 WOMAN 2902403	12	YELLOW BOW 53 REGULAR 2905301	54
INDIGO BOW 37 REGULAR 2903701	44	RED BOW 29 REGULAR 2902901	14	YELLOW BOW 53 SLIM 2905302	54
INDIGO BOW 37 SLIM 2903702	44	RED BOW 29 SLIM 2902902	14	YELLOW BOW 53 WOMAN 2905303	54
INDIGO BOW 37 WOMAN 2903703	44	RED BOW 29 WOMAN 2902903	14	YELLOW BOW 54 REGULAR 2905401	56
INDIGO BOW 130 REGULAR 2913001	46	RED BOW 120 REGULAR 2912001	16	YELLOW BOW 54 SLIM 2905402	56
INDIGO BOW 130 SLIM 2913002	46	RED BOW 120 SLIM 2912002	16	YELLOW BOW 54 WOMAN 2905403	56



IT'S ONLY
NON IRON
BUT I LIKE IT

